

WAAS CH <b>61020</b> <b>W02A</b>	APP CRS <b>022°</b>	Rwy Idg TDZE Apt Elev	<b>6526</b> <b>38</b> <b>42</b>
--	------------------------	-----------------------------	---------------------------------------

## RNAV (GPS) RWY 2

NEWPORT NEWS/WILLIAMSBURG INTL (PHF)

RNP APCH.



For uncompensated Baro-VNAV systems, LNAV/VNAV NA below -11°C or above 54°C.

**MISSED APPROACH:** Climb to 2000 direct PANLE and hold.

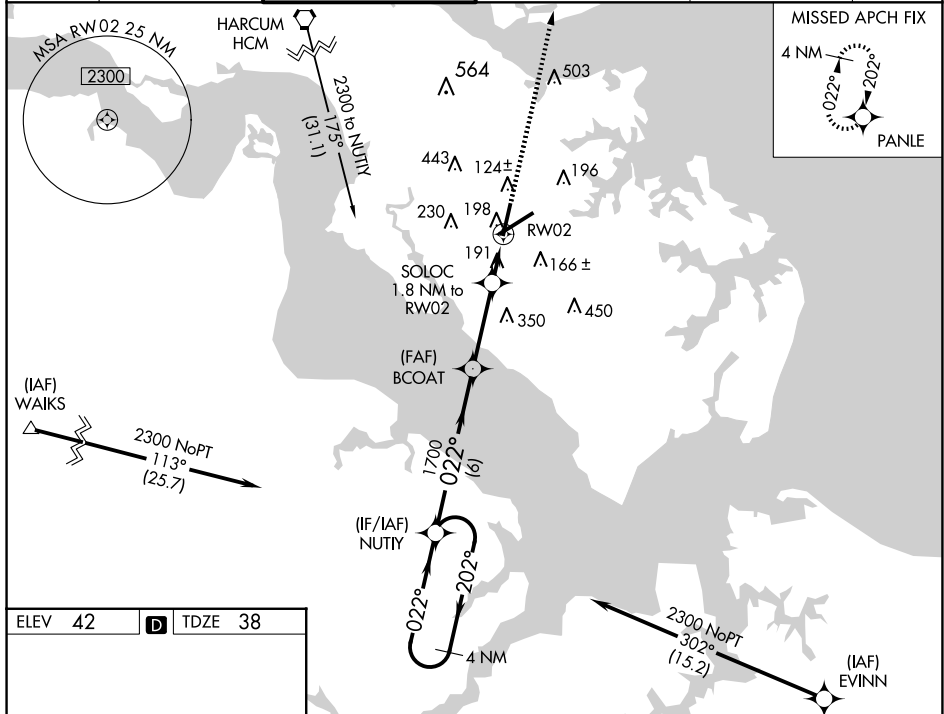
ATIS  
**128.65**

NORFOLK APP CON  
125.7 335.625

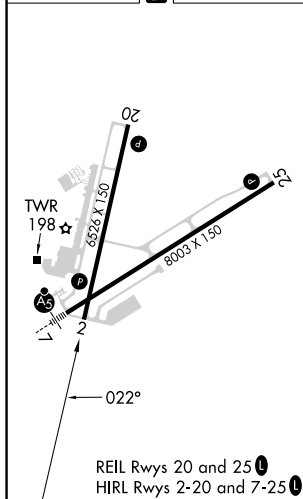
NEWPORT NEWS TOWER★  
118.7(CTAF) **L** 257.9

GND CON  
121.9 348.6

CLNC DEL  
**121.65 225.4**

UNICOM  
122.95

ELEV 42	<b>D</b>	TDZE 38
---------	----------	---------



4 NM Holding Pattern

VGS and RNAV glidepath not coincident (VGS Angle 3.00°/TCH 53).

2000

PANLE

NUTTY

BCOAT

SOLOC

1.8 NM to RW02

2300

202°

022°

1700

022°

1700

\*1.1 NM to RW02

\*LNNAV only

GP 3.00° TCH 60

6 NM

3.2 NM

0.7

1.1 NM

RW02

CATEGORY	A	B	C	D
LPV DA	241-1 203 (200-1)			
LNNAV/VNAV DA	476-1½ 438 (500-1½)			
LNNAV MDA	460-1 422 (500-1)		460-1¼ 422 (500-1¼)	
CIRCLING	520-1 478 (500-1)	540-1 498 (500-1)	760-2 718 (800-2)	780-2¼ 738 (800-2¼)

## RNAV (GPS) RWY 2