

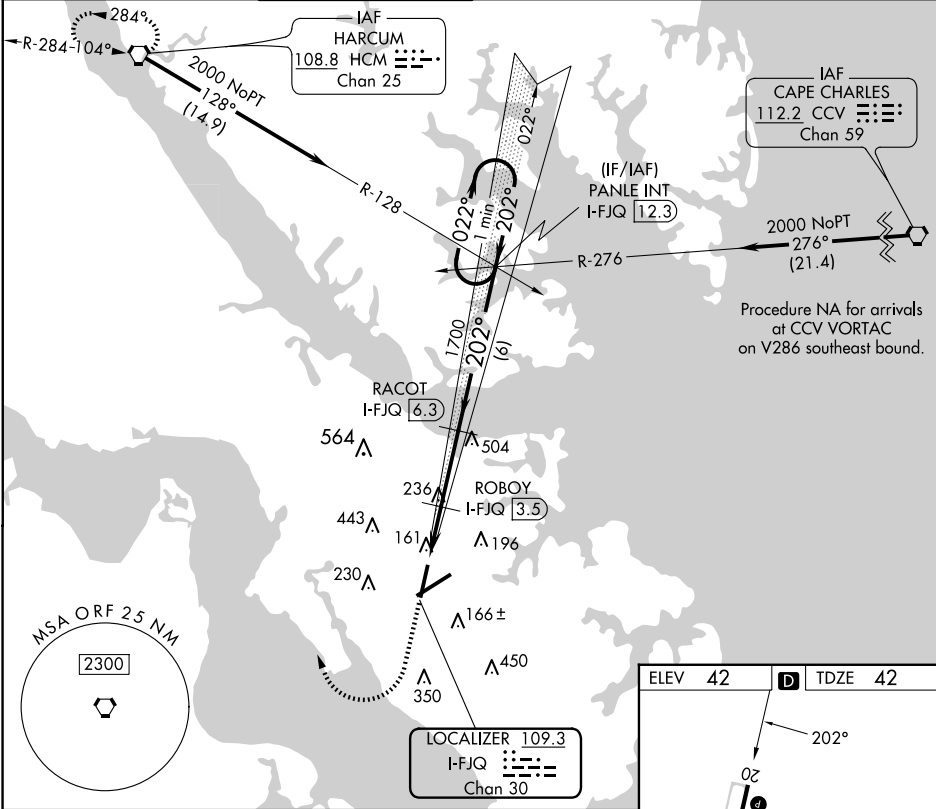
LOC/DME I-FJQ	APP CRS	Rwy Idg	6526
109.3	202°	TDZE	42
Chan 30		Apt Elev	42




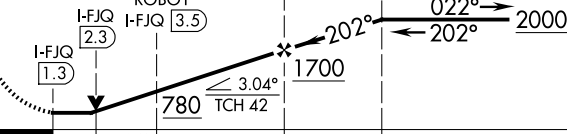

LOC RWY 20

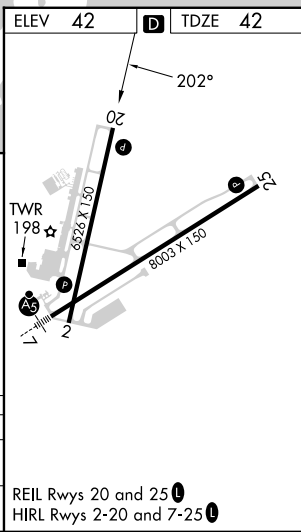
NEWPORT NEWS/WILLIAMSBURG INTL (PHF')

DME required.		MISSED APPROACH: Climb to 2000 then right turn direct HCM VORTAC and hold.			
▼ ▲ Rwy 20 helicopter visibility reduction below ¾ SM NA.					

ATIS	NORFOLK APP CON	NEWPORT NEWS TOWER★	GND CON	CLNC DEL	UNICOM
128.65	125.7 335.625	118.7(CTAF) 257.9	121.9 348.6	121.65 225.4	122.95



2000 ↑		HCM 	PANLE INT I-FJQ 12.3 One Minute Holding Pattern			
			RACOT I-FJQ 6.3			
		ROBOY I-FJQ 3.5				
		I-FJQ 2.3				
		I-FJQ 1.3				
						
		1.1 1.2 NM	2.8 NM	6 NM		
CATEGORY	A	B	C	D		
S-20	420-1 378 (400-1)					
 CIRCLING	520-1 478 (500-1)	540-1 498 (500-1)	760-2 718 (800-2)	780-2¼ 738 (800-2¼)		



LOC RWY 20

NE-3, 10 JUL 2025 to 07 AUG 2025

NE-3, 10 JUL 2025 to 07 AUG 2025