

WAAS CH 53621 W07A	APP CRS 068°	Rwy Idg 10002 TDZE 742 Apt Elev 742
----------------------------------------	------------------------	----------------------------------------------------------------

RNAV (GPS) RWY 7

CHICAGO/ROCKFORD INTL (RFD)

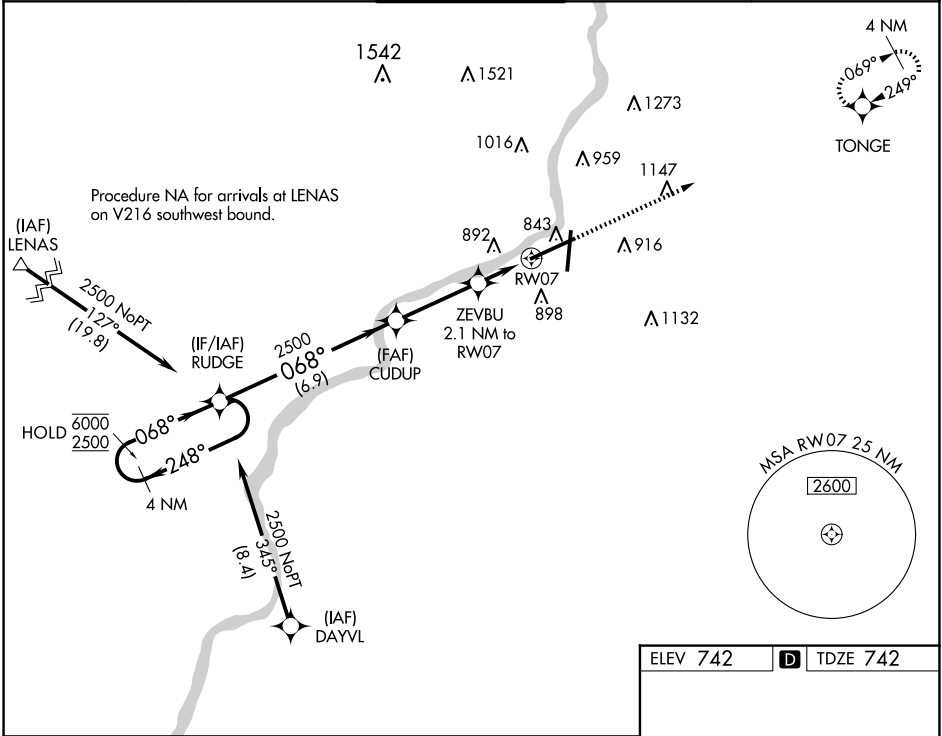
RNP APCH - GPS.

For uncompensated Baro-VNAV systems, LNAV/VNAV NA below -16°C or above 54°C.

ALSF-2

MISSED APPROACH: Climb to 2500 direct TONGE and hold.

ATIS 127.6	ROCKFORD APP CON 121.0 327.0	ROCKFORD TOWER 118.1 290.375	GND CON 121.9 290.375	CLNC DEL 119.25
----------------------	----------------------------------------	----------------------------------------	---------------------------------	---------------------------



4 NM Holding Pattern

VGSI and RNAV glidepath not coincident (VGSI Angle 3.00/TCH 69°).

2500

TONGE

RUDGE

CUDUP

ZEBU

RW07

6000

2500

GP 3.00°

TCH 60

2500

1460

2500

1460

CATEGORY	A	B	C	D
LPV DA	942/24 200 (200-½)			
LNAV/VNAV DA	1167/45 425 (500-¾)			
LNAV MDA	1240/24	498 (500-½)	1240/50	498 (500-1)
CIRCLING	1240-1 498 (500-1)	1280-1 538 (600-1)	1320-1½ 578 (600-½)	1460-2¼ 718 (800-2¼)

REIL Rwy 19 and 25

HIRL Rwy 1-19 and 7-25

TDZ/CL Rwy 1 and 7