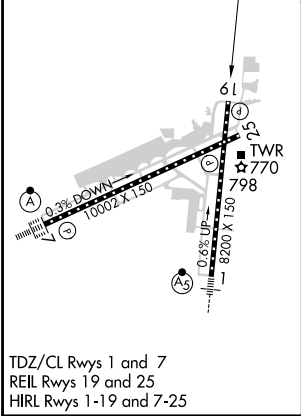
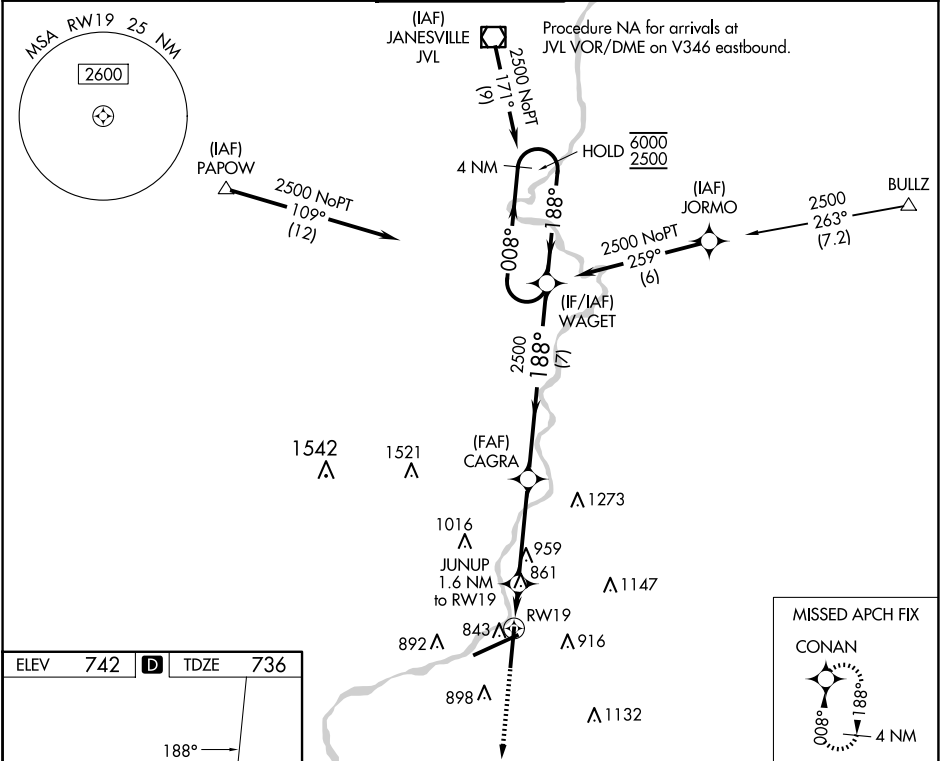


| | | |
|--|------------------------|---|
| WAAS CH 40435 W19A | APP CRS 188° | Rwy Idg TDZE 736 Apt Elev 742 |
|--|------------------------|---|

RNAV (GPS) RWY 19
CHICAGO/ROCKFORD INTL (RFD)

| | | | | |
|---|--|--|---------------------------------|---|
| RNP APCH - GPS. For uncompensated Baro-VNAV systems, LNAV/VNAV NA below -20°C or above 54°C. | | | | MISSED APPROACH: Climb to 2500 direct CONAN and hold. |
| ATIS 127.6 | ROCKFORD APP CON 121.0 327.0 | ROCKFORD TOWER 118.1 290.375 | GND CON 121.9 290.375 | CLNC DEL 119.25 |



| | | | | |
|---|------------------------|--------------------|----------------------------|----------------------------|
| 2500 CONAN VGSi and RNAV glidepath not coincident (VGSi Angle 3.00/TCH 75). CAGRA | | | | |
| 4 NM Holding Pattern | | | | |
| WAGET | | | | |
| 188° 008° 6000 2500 GP 3.00° TCH 50 | | | | |
| 1 NM 0.6 NM 3.8 NM 7 NM | | | | |
| CATEGORY | A | B | C | D |
| LPV DA | 936-3/4 200 (200-3/4) | | | |
| LNAV/VNAV DA | 1039-7/8 303 (300-7/8) | | | |
| LNAV MDA | 1120-1 | 384 (400-1) | 1120-1 1/2 | 384 (400-1 1/2) |
| CIRCLING | 1220-1 478 (500-1) | 1280-1 538 (600-1) | 1320-1 1/2 578 (600-1 1/2) | 1460-2 1/4 718 (800-2 1/4) |