

LOC/DME I-UDY
109.55
Chan **32** (Y)

APP CRS
068°

Rwy Idg **10002**
TDZE **742**
Apt Elev **742**

ILS RWY 7 (SA CAT I)
CHICAGO/ROCKFORD INTL (RFD)

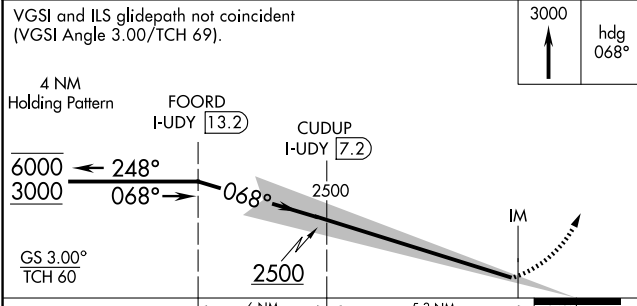
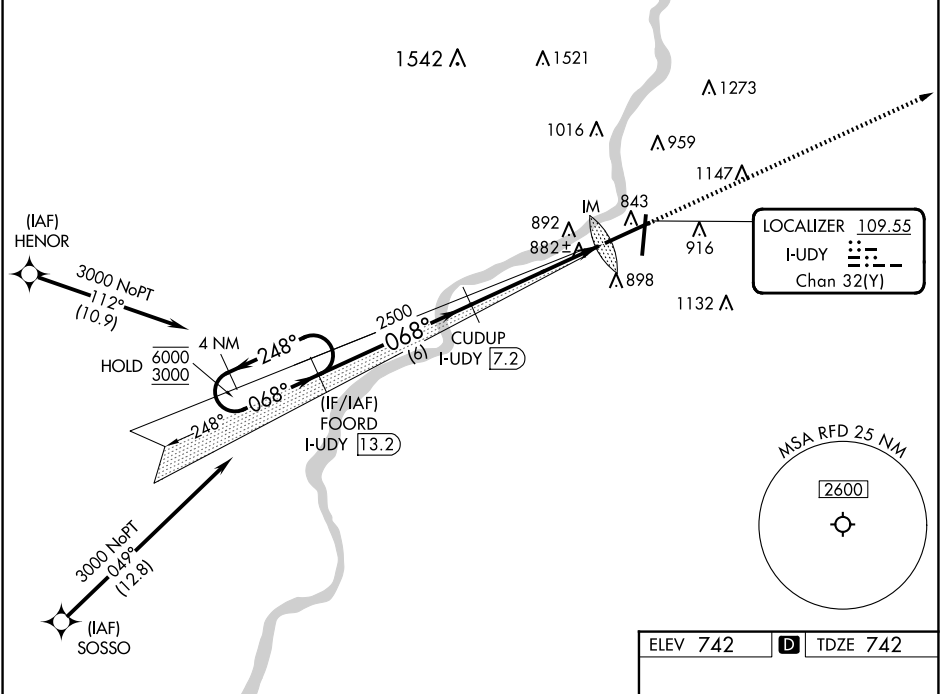
RNP APCH - GPS. From HENOR or SOSSO. RADAR required.

ALSIF-2

ASR Requires specific OPSPEC, MSPEC, or LOA approval.

MISSED APPROACH: Climb to 3000 on heading 068°. Expect RADAR vectors. (RADAR required).

ATIS 127.6	ROCKFORD APP CON 121.0 327.0	ROCKFORD TOWER 118.1 290.375	GND CON 121.9 290.375	CLNC DEL 119.25
----------------------	--	--	---------------------------------	---------------------------



CATEGORY	A	B	C	D
S-ILS 7	RA 164/14 150 DA 892			

SA CATEGORY I ILS - SPECIAL AIRCREW & AIRCRAFT CERTIFICATION REQUIRED

REIL Rwy's 19 and 25
HIRL Rwy's 1-19 and 7-25
TDZ/CL Rwy's 1 and 7