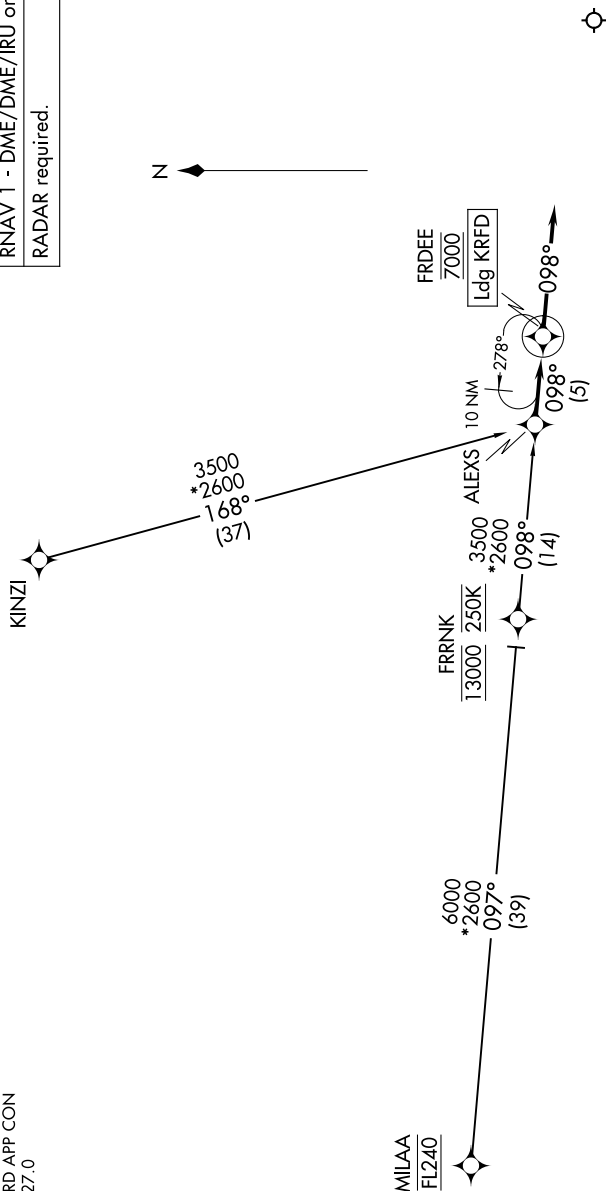


CHICAGO/ROCKFORD INTL (RFD)
CHICAGO/ROCKFORD, ILLINOIS

CHICAGO/ROCKFORD, ILLINOIS

ROCKFORD APP CON
121.0 327.0
ATIS
127.6



SADIE

NOTE: Chart not to scale.

ARRIVAL ROUTE DESCRIPTION

KINZI TRANSITION (KINZI.ALEXS1)
MILAA TRANSITION (MILAA.ALEXS1)

From ALEXS on track 098° to cross FRDEE at 7000, then on track 098°. Expect RADAR vectors to final approach course.

EC-3, 10 JUL 2025 to 07 AUG 2025

CHICAGO/ROCKFORD, ILLINOIS
CHICAGO/ROCKFORD INTL (RFD)

(ALEXS.ALEXS1) 25JAN24