

LOS ALAMITOS, CALIFORNIA

RNAV (GPS) RWY 22L

APCH CRS	Rwy Idg	8001
223°	TDZE	36
	Arpt Elev	36

- (USA)

LOS ALAMITOS AAF (JOINT FORCES TRAINING BASE JFTB) (KSLI)

RNP APCH- GPS

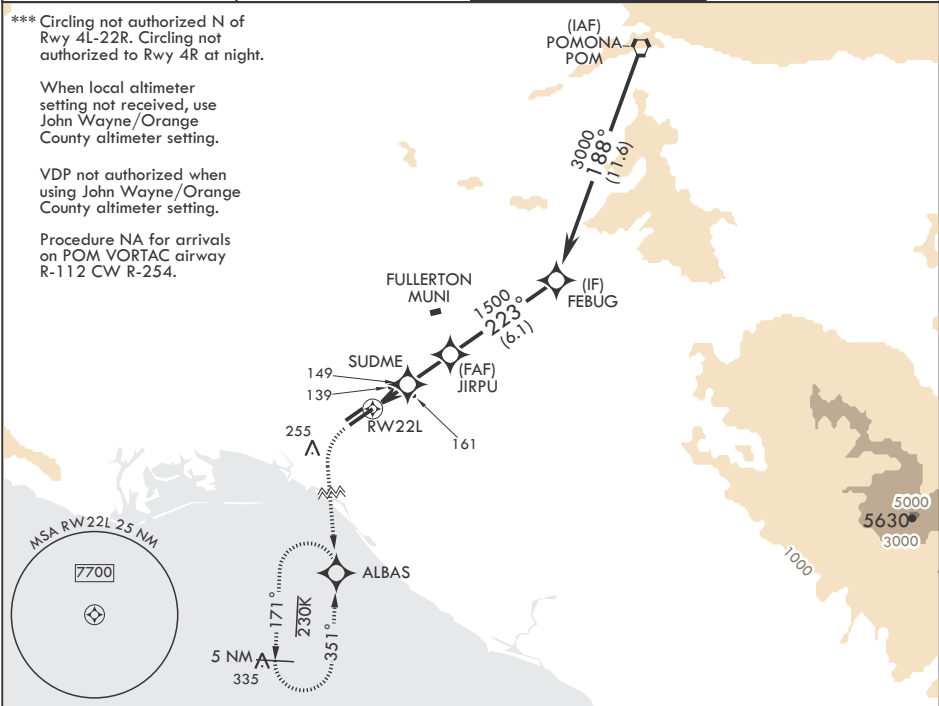
\* When ALS inop, increase CAT CD vis to 1 1/8 miles.

\*\* When ALS inop, using John Wayne/Orange County altimeter setting, increase CAT CD vis to 1 1/4 miles.

SALS

MISSED APPROACH: Climb to 600 then climbing left turn to 2100 direct ALBAS and hold.

ATIS★ 118.875 379.975	SOCAL APP CON/DEP CON 125.35 316.125	TOWER★ 123.85 (CTAF) 251.15	GND CON 126.95 257.95
--------------------------	---	--------------------------------	--------------------------



600

2100

ALBAS

VGSI and descent angles not coincident.

RW22L

1 NM to RW22L

SUDME

JIRPU

FEBUG

720

1500

3000

223°

223°

2 NM

2.4 NM

≤3.00°

TCH 55

CATEGORY	A	B	C	D
LNAV MDA*	420-1	384	(400-1)	
CIRCLING***	440-1 404 (500-1)	500-1 464 (500-1)	600-1½ 564 (600-1½)	600-2 564 (600-2)
JOHN WAYNE/ORANGE COUNTY ALTIMETER SETTING MINIMUMS				
LNAV MDA**	460-1	424	(500-1)	
CIRCLING***	480-1 444 (500-1)	540-1 504 (600-1)	640-1¼ 604 (700-1¼)	640-2 604 (700-2)

HIRL Rwy 4R-22L

MIRL Rwy 4L-22R

REIL Rwy 22L

ELEV 36

TDZE 36

TWR

5901 x 150

8001 x 200

223°

223°

LOS ALAMITOS, CALIFORNIA

LOS ALAMITOS AAF (JOINT FORCES TRAINING BASE JFTB) (KSLI)

Amdt 2 11 JUL24

33°47'N - 118°03'W

RNAV (GPS) RWY 22L

SW-3, 10 JUL 2025 to 07 AUG 2025

SW-3, 10 JUL 2025 to 07 AUG 2025