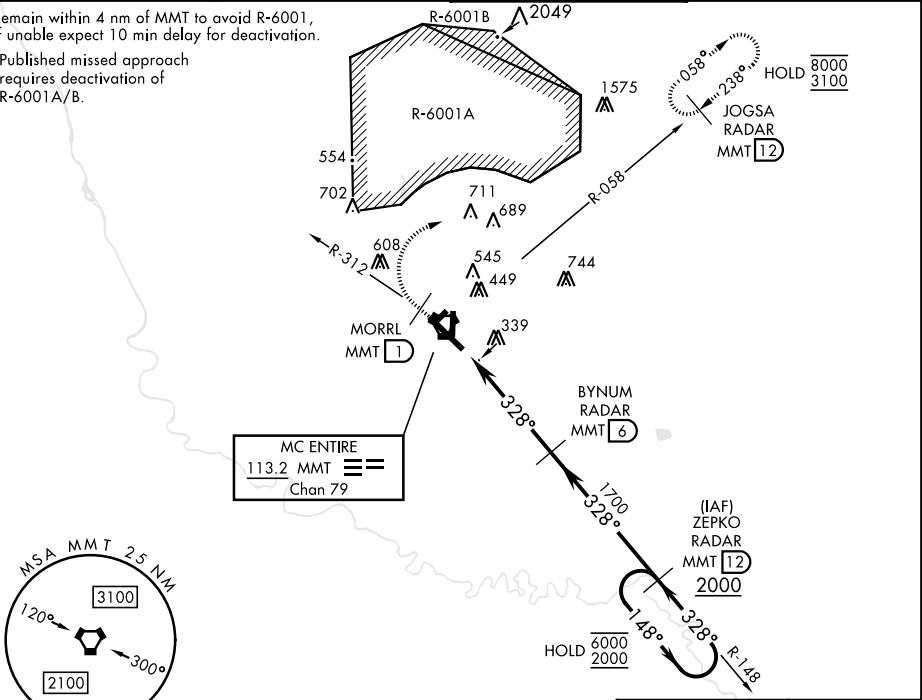


TACAN RWY 32

VORTAC MMT 113.2 Chan 79	APCH CRS 328°	Rwy Idg TDZE 243 Arpt Elev 254	[USAF]	MC ENTIRE JNGB (KMMT)
* When ALS inop, increase CAT AB RVR to 55, vis to 1 mile, CAT CDE RVR to 60, vis to 1½ miles.			ALSF-1	† MISSED APPROACH: Climb to 1100 direct MORRL/1 DME then climbing right turn to 3100 intercept MMT R-058 direct JOGSA/12 DME and hold.
ATIS ★ 327.05	SHAW APP CON 125.4 318.1	TOWER ★ 132.4 (CTAF) 253.5	GND CON 127.625 226.675	

Remain within 4 nm of MMT to avoid R-6001, if unable expect 10 min delay for deactivation.

† Published missed approach requires deactivation of R-6001A/B.



EMERG SAFE ALT 100 NM 3800

1100

MORRL

1

3100

MMT

R-058

JOGSA

MMT

12

ZEPKO RADAR

MMT

12

148°

6000

328°

2000

328°

1700

2.67°

TCH 48

0.5

4.5 NM

MMT VORTAC

HUTEM MMT

1.5

2.3

6

6

BYNUM RADAR

MMT

6

CATEGORY

A

B

C

D

E

S-32 *

640/24

397 (400-½)

640/40

397 (400-¾)

CIRCLING

740-1

840-1

880-1¾

940-2¼

1020-2¾

486 (500-1)

586 (600-1)

626 (700-1¾)

686 (700-2¼)

766 (800-2¾)

FAF to MAP 4.5 NM

Knots

60

90

120

150

180

Min:Sec

4:30

3:00

2:15

1:48

1:30

1100

MORRL

1

3100

MMT

R-058

JOGSA

MMT

12

ZEPKO RADAR

MMT

12

148°

6000

328°

2000

328°

1700

2.67°

TCH 48

0.5

4.5 NM

MMT VORTAC

HUTEM MMT

1.5

2.3

6

6

BYNUM RADAR

MMT

6

CATEGORY

A

B

C

D

E

S-32 *

640/24

397 (400-½)

640/40

397 (400-¾)

CIRCLING

740-1

840-1

880-1¾

940-2¼

1020-2¾

486 (500-1)

586 (600-1)

626 (700-1¾)

686 (700-2¼)

766 (800-2¾)

FAF to MAP 4.5 NM

Knots

60

90

120

150

180

Min:Sec

4:30

3:00

2:15

1:48

1:30

1100

MORRL

1

3100

MMT

R-058

JOGSA

MMT

12

ZEPKO RADAR

MMT

12

148°

6000

328°

2000

328°

1700

2.67°

TCH 48

0.5

4.5 NM

MMT VORTAC

HUTEM MMT

1.5

2.3

6

6

BYNUM RADAR

MMT

6

CATEGORY

A

B

C

D

E

S-32 *

640/24

397 (400-½)

640/40

397 (400-¾)

CIRCLING

740-1

840-1

880-1¾

940-2¼

1020-2¾

486 (500-1)

586 (600-1)

626 (700-1¾)

686 (700-2¼)

766 (800-2¾)

FAF to MAP 4.5 NM

Knots

60

90

120

150

180

Min:Sec

4:30

3:00

2:15

1:48

1:30

1100

MORRL

1

3100

MMT

R-058

JOGSA

MMT

12

ZEPKO RADAR

MMT

12

148°

6000

328°

2000

328°

1700

2.67°

TCH 48

0.5

4.5 NM

MMT VORTAC

HUTEM MMT

1.5

2.3

6

6

BYNUM RADAR

MMT

6

CATEGORY

A

B

C

D

E

S-32 *

640/24

397 (400-½)

640/40

397 (400-¾)

CIRCLING

740-1

840-1

880-1¾

940-2¼

1020-2¾

486 (500-1)

586 (600-1)

626 (700-1¾)

686 (700-2¼)

766 (800-2¾)

FAF to MAP 4.5 NM

Knots

60

90

120

150

180

Min:Sec

4:30

3:00

2:15

1:48

1:30

1100

MORRL

1

3100

MMT

R-058

JOGSA

MMT

12

ZEPKO RADAR

MMT

12

148°

6000

328°

2000

328°

1700

2.67°

TCH 48

0.5

4.5 NM

MMT VORTAC

HUTEM MMT

1.5

2.3

6

6

BYNUM RADAR

MMT

6

CATEGORY

A

B

C

D

E

S-32 *

640/24

397 (400-½)

640/40

397 (400-¾)

CIRCLING

740-1

840-1

880-1¾

940-2¼

1020-2¾

486 (500-1)

586 (600-1)

626 (700-1¾)

686 (700-2¼)

766 (800-2¾)

FAF to MAP 4.5 NM

Knots

60

90

120

150

180

Min:Sec

4:30

3:00

2:15

1:48

1:30

1100

MORRL

1

3100

MMT

R-058

JOGSA

MMT

12

ZEPKO RADAR

MMT

12

148°

6000

328°

2000

328°

1700

2.67°

TCH 48

0.5

4.5 NM

MMT VORTAC

HUTEM MMT

1.5

2.3

6

6

BYNUM RADAR

MMT

6

CATEGORY

A

B

C

D

E

S-32 *

640/24

397 (400-½)

640/40

397 (400-¾)

CIRCLING

740-1

840-1

880-1¾

940-2¼

1020-2¾

486 (500-1)

586 (600-1)

626 (700-1¾)

686 (700-2¼)

766 (800-2¾)

FAF to MAP 4.5 NM

Knots

60

90

120

150

180

Min:Sec

4:30

3:00

2:15

1:48

1:30

1100

MORRL

1

3100

MMT

R-058

JOGSA

MMT

12

ZEPKO RADAR

MMT

12

148°

6000

328°

2000

328°

1700

2.67°

TCH 48

0.5

4.5 NM

MMT VORTAC

HUTEM MMT

1.5

2.3

6

6

BYNUM RADAR

MMT

6

CATEGORY

A

B

C

D

E

S-32 *

640/24

397 (400-½)

640/40

397 (400-¾)

CIRCLING

740-1

840-1

880-1¾

940-2¼

1020-2¾

486 (500-1)

586 (600-1)

626 (700-1¾)

686 (700-2¼)

766 (800-2¾)

FAF to MAP 4.5 NM

Knots

60

90

120

150

180

Min:Sec

4:30

3:00

2:15

1:48

1:30

1100

MORRL

1

3100

MMT

R-058

JOGSA

MMT

12

ZEPKO RADAR

MMT

12

148°

6000

328°

2000

328°

1700

2.67°

TCH 48

0.5

4.5 NM

MMT VORTAC

HUTEM MMT

1.5

2.3

6

6

BYNUM RADAR

MMT

6

CATEGORY

A

B

C

D

E

S-32 *

640/24

397 (400-½)

640/40

397 (400-¾)

CIRCLING

740-1

840-1

880-1¾

940-2¼

1020-2¾

486 (500-1)

586 (600-1)

626 (700-1¾)

686 (700-2¼)

766 (800-2¾)

FAF to MAP 4.5 NM

Knots

60

90

120

150

180

Min:Sec

4:30

3:00

2:15

1:48

1:30

1100

MORRL

1

3100

MMT

R-058

JOGSA

MMT

12

ZEPKO RADAR

MMT

12

148°

6000

328°

2000

328°

1700

2.67°

TCH 48

0.5

4.5 NM

MMT VORTAC

HUTEM MMT

1.5

2.3

6

6

BYNUM RADAR

MMT

6

CATEGORY

A

B

C

D

E

S-32 *

640/24

397 (400-½)

640/40

397 (400-¾)

CIRCLING

740-1

840-1

880-1¾

940-2¼

1020-2¾

486 (500-1)

586 (600-1)

626 (700-1¾)

686 (700-2¼)

766 (800-2¾)

FAF to MAP 4.5 NM

Knots

60

90

120

150

180

Min:Sec

4:30

3:00

2:15

1:48

1:30

1100

MORRL

1

3100

MMT

R-058

JOGSA

MMT

12

ZEPKO RADAR

MMT

12

148°

6000

328°

2000

328°

1700

2.67°

TCH 48

0.5

4.5 NM

MMT VORTAC

HUTEM MMT

1.5

2.3

6

6

BYNUM RADAR

MMT

6

CATEGORY

A

B

C

D

E

S-32 *

640/24

397 (400-½)

640/40

397 (400-¾)

CIRCLING

740-1

840-1

880-1¾

940-2¼

1020-2¾

486 (500-1)

586 (600-1)

626 (700-1¾)

686 (700-2¼)

766 (800-2¾)

FAF to MAP 4.5 NM

Knots

60

90

120

150

180

Min:Sec

4:30

3:00

2:15

1:48

1:30

1100

MORRL

1

3100

MMT

R-058

JOGSA

MMT

12

ZEPKO RADAR

MMT

12

148°

6000

328°

2000

328°

1700

2.67°

TCH 48

0.5

4.5 NM

MMT VORTAC

HUTEM MMT

1.5

2.3

6

6

BYNUM RADAR

MMT

6

CATEGORY

A

B

C

D

E

S-32 *

640/24

397 (400-½)

640/40

397 (400-¾)

CIRCLING

740-1

840-1

880-1¾

940-2¼

1020-2¾

486 (500-1)

586 (600-1)

626 (700-1¾)

686 (700-2¼)

766 (800-2¾)

FAF to MAP 4.5 NM

Knots

60

90

120

150

180

Min:Sec

4:30

3:00

2:15

1:48

1:30

1100

MORRL

1

3100

MMT

R-058

JOGSA

MMT

12

ZEPKO RADAR

MMT

12

148°

6000

328°

2000

328°

1700

2.67°

TCH 48

0.5

4.5 NM

MMT VORTAC

HUTEM MMT

1.5

2.3

6

6

BYNUM RADAR

MMT

6

CATEGORY

A

B

C

D

E

S-32 *

640/24

397 (400-½)

640/40

397 (400-¾)

CIRCLING

740-1

840-1

880-1¾

940-2¼

1020-2¾

486 (500-1)

586 (600-1)

626 (700-1¾)

686 (700-2¼)

766 (800-2¾)

FAF to MAP 4.5 NM

Knots

60

90

120

150

180

Min:Sec

4:30

3:00

2:15

1:48

1:30

1100

MORRL

1

3100

MMT

R-058

JOGSA

MMT

12

ZEPKO RADAR

MMT

12

148°

6000

328°

2000

328°

1700

2.67°

TCH 48

0.5

4.5 NM

MMT VORTAC

HUTEM MMT

1.5

2.3

6

6

BYNUM RADAR

MMT

6

CATEGORY

A

B

C

D

E

S-32 *

640/24

397 (400-½)

640/40

397 (400-¾)

CIRCLING

740-1

840-1

880-1¾

940-2¼

1020-2¾

486 (500-1)

586 (600-1)

626 (700-1¾)

686 (700-2¼)

766 (800-2¾)

FAF to MAP 4.5 NM

Knots

60

90

120

150

180

Min:Sec

4:30

3:00

2:15

1:48

1:30

1100

MORRL

1

3100

MMT

R-058

JOGSA

MMT

12

ZEPKO RADAR

MMT

12

148°

6000

328°

2000

328°

1700

2.67°

TCH 48

0.5

4.5 NM

MMT VORTAC

HUTEM MMT

1.5

2.3

6

6

BYNUM RADAR

MMT

6

CATEGORY

A

B

C

D

E

S-32 *

640/24

397 (400-½)

640/40

397 (400-¾)

CIRCLING

740-1

840-1

880-1¾

940-2¼

1020-2¾

486 (500-1)

586 (600-1)

626 (700-1¾)

686 (700-2¼)

766 (800-2¾)

FAF to MAP 4.5 NM

Knots

60

90

120

150

180

Min:Sec

4:30

3:00

2:15

1:48

1:30

1100

MORRL

1

3100

MMT

R-058

JOGSA

MMT

12

ZEPKO RADAR

MMT

12

148°

6000

328°

2000

328°

1700

2.67°

TCH 48

0.5

4.5 NM

MMT VORTAC

HUTEM MMT

1.5

2.3

6

6

BYNUM RADAR

MMT

6

CATEGORY

A

B

C

D

E

S-32 *

640/24

397 (400-½)

640/40

397 (400-¾)

CIRCLING

740-1

840-1

880-1¾

940-2¼

1020-2¾

486 (500-1)

586 (600-1)

626 (700-1¾)

686 (700-2¼)

766 (800-2¾)

FAF to MAP 4.5 NM

Knots

60

90

120

150

180

Min:Sec

4:30

3:00

2:15

1:48

1:30

1100

MORRL

1

3100

MMT

R-058

JOGSA

MMT

12

ZEPKO RADAR

MMT

12

148°

6000

328°

2000

328°

1700

2.67°

TCH 48

0.5

4.5 NM

MMT VORTAC

HUTEM MMT

1.5

2.3

6

6

BYNUM RADAR

MMT

6

CATEGORY

A

B

C

D

E

S-32 *

640/24

397 (400-½)

640/40

397 (400-¾)

CIRCLING

740-1

840-1

880-1¾

940-2¼

1020-2¾

486 (500-1)

586 (600-1)

626 (700-1¾)

686 (700-2¼)

766 (800-2¾)

FAF to MAP 4.5 NM

Knots

60

90

120

150

180

Min:Sec

4:30

3:00

2:15

1:48

1:30

1100

MORRL

1

3100

MMT

R-058

JOGSA

MMT

12