

VORTAC MMT 113.2 Chgn 79	APCH CRS 328°	Rwy Idg 9012 TDZE 243 Arpt Elev 254
--	-------------------------	--

HI-TACAN RWY 32

MC ENTIRE JNGB (KMMT)

T * When ALS inop, increase CAT CDE RVR 60, vis to 1 1/8 miles.

ALSF-1

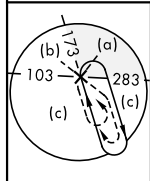
† MISSED APPROACH: Climb to 1100 direct MORRL/1 DME then climbing right turn to 3100 intercept MMT R-058 direct JOGSA/12 DME and hold.

ATIS ★
327.05

SHAW APP CON
125.4 318.1

TOWER ★
132.4 (CTAF) **L** 253.5

GND CON
127.625 226.675



Remain within 4 NM of MMT to avoid R6001,
if unable expect 10 min delay for deactivation
R-6001B

HOLD 8000
049 3100

† Published missed approach requires deactivation of R-6001A/B.

FLORENCE
5.2 FLO :
Chan 99

Florence feeder requires
ATC approval to
avoid R-6002.

COLLIERS
113.9 IRQ
Chan 86

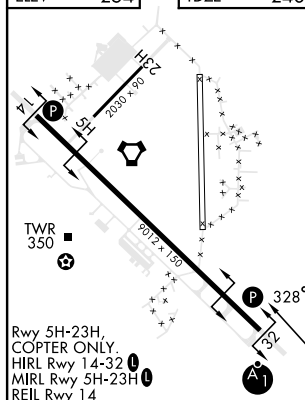
MC ENTIRE
113.2 MMT ==
Chan 79

SAVANNAH
95 SAV ::
Chan 106(Y)

CHARLESTON
3.5 CHS 
Chen 82

EMERG SAFE ALT 100 NM 3800

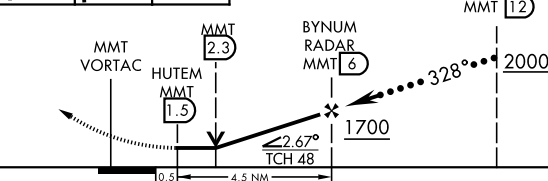
ELEV	254	TDZE	243
------	-----	------	-----




FAF to MAP 4.5 NM

Knots	120	140	160	180	200
Min:Sec	2:15	1:56	1:41	1:30	1:21

1100 MORRL 1.5	3100 MMT R-058	JOGSA MMT 12
----------------------	----------------------	--------------------



CATEGORY	C	D	E
S-32 *	640/40	397 (400-¾)	
 CIRCLING	880-1¾ 626 (700-1¾)	940-2¼ 686 (700-2¼)	1020-2¾ 766 (800-2¾)

EASTOVER, SOUTH CAROLINA

Amdt 4 25MAY17

33°55'N-80°48'W

MC ENTIRE JNGB (KMMT)

HI-TACAN RWY 32