

EASTOVER, SOUTH CAROLINA

LOC I-MMT <b>111.1</b>	APCH CRS <b>322°</b>	Rwy Idg TDZE Arpt Elev <b>9012</b> <b>243</b> <b>254</b>
---------------------------	-------------------------	---

[USAF]

MC ENTIRE JNGB (KMMT)

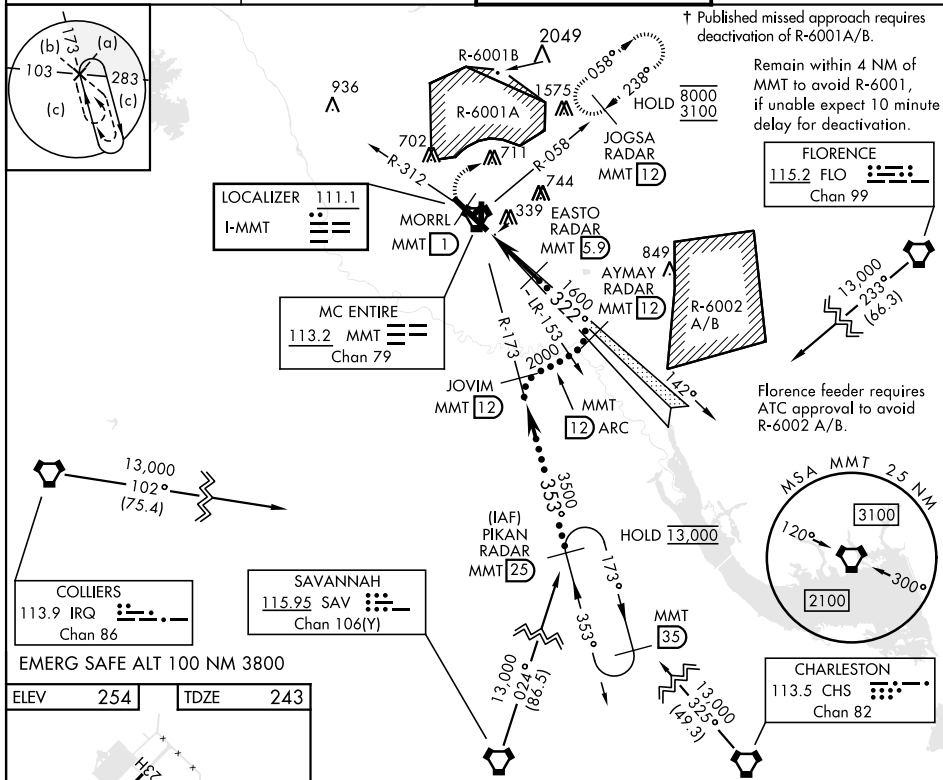
## HI-ILS or LOC/DME RWY 32

- ▼ \*When ALS inop, increase CAT CDE RVR to 40, vis to  $\frac{3}{4}$  mile.  
 \*\*When ALS inop, increase CAT C RVR to 55, vis to 1 mile.



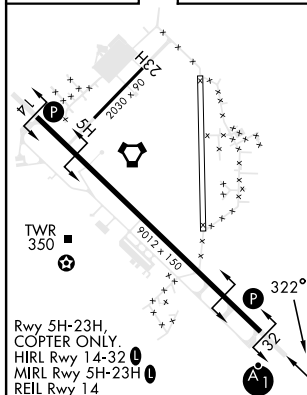
† MISSED APPROACH: Climb to 1100 direct MORRL/  
1 DME then climbing right turn to 3100 intercept  
MMT R-058 direct JOGSA/12 DME and hold.

ATIS ★ <b>327.05</b>	SHAW APP CON <b>125.4 318.1</b>	TOWER★ <b>132.4 (CTAF) 0 253.5</b>	GND CON <b>127.625 226.675</b>
-------------------------	------------------------------------	---------------------------------------	-----------------------------------

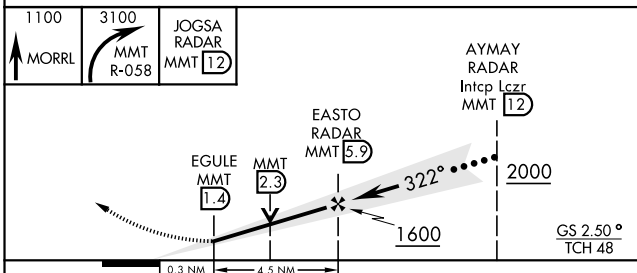


EMERG SAFE ALT 100 NM 3800

ELEV 254	TDZE 243
----------	----------



FAF to MAP 4.5 NM					
Knots	120	140	160	180	200
Min:Sec	2:15	1:56	1:41	1:30	1:21



CATEGORY	C	D	E
S-ILS 32 *	443/24	200 (200-1/2)	
S-LOC 32 **	620/35	377 (400-5/8)	
CIRCLING	880-1 3/4 626 (700-1 3/4)	940-2 1/4 686 (700-2 1/4)	1020-2 3/4 766 (800-2 3/4)

EASTOVER, SOUTH CAROLINA

33° 55'N-80° 48'W

MC ENTIRE JNGB (KMMT)

Amdt 4 25MAY17

## HI-ILS or LOC/DME RWY 32

SE-2, 10 JUL 2025 to 07 AUG 2025