

WAAS	APP CRS	Rwy Idg	7006
CH 66010	059°	TDZE	94
W06A		Apt Elev	99

RNAV (GPS) RWY 6

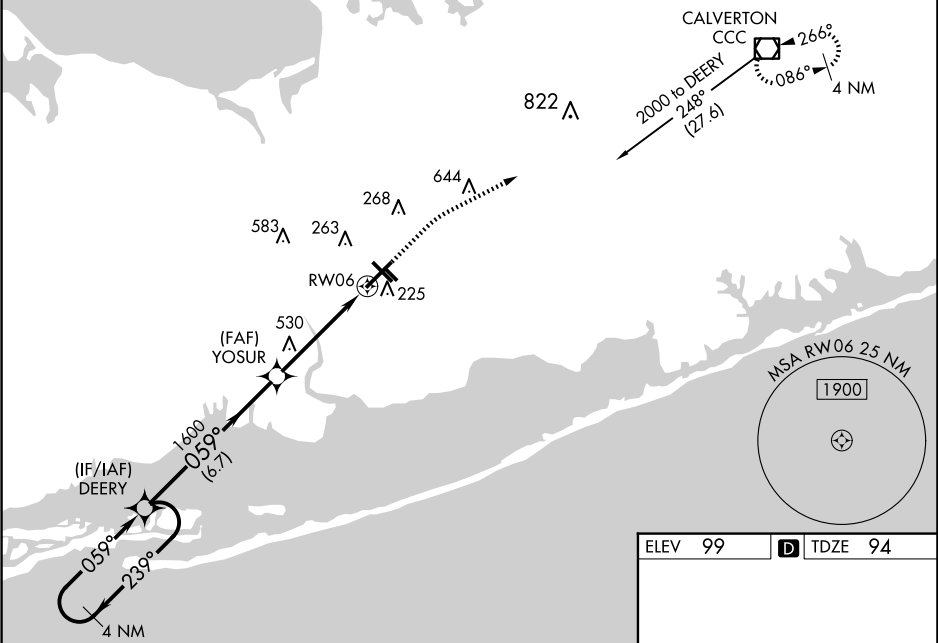
LONG ISLAND MAC ARTHUR (ISP)

▼ For uncompensated Baro-VNAV systems, LNAV/VNAV NA below -14°C (7°F) or above 54°C (130°F). DME/DME RNP-0.3 NA. VDP and Baro-VNAV NA when using Shirley altimeter setting. When local altimeter setting not received, use Shirley altimeter setting and increase all DA 28 feet and all MDA 40 feet, increase LNAV/VNAV all Cats visibility to RVR 3000 and LNAV Cat C and D visibility to 4500. Increase Circling Cat C and D visibility ¼ mile. For inoperative MALSR, increase LNAV/VNAV all Cats visibility to RVR 4500 and LNAV Cat C and D to RVR 6000. For inoperative MALSR when using Shirley altimeter setting increase LNAV/VNAV all Cats visibility to RVR 5000. **RVR 1800 authorized with use of FD or AP or HUD to DA, NA when using Shirley altimeter setting.

MALSR

MISSED APPROACH:
Climb to 600 then climbing right turn to 2000 direct CCC VOR/DME and hold.

ATIS	NEW YORK APP CON	LONG ISLAND TOWER*	GND CON	CLNC DEL	UNICOM
120.725	120.05 343.75	119.3 (CTAF) 0335.5	135.3	121.85	122.95



4 NM Holding Pattern DEERY

CATEGORY	A	B	C	D
LPV DA	**294/24		200 (200-½)	
LNAV/VNAV DA	385/24		291 (300-½)	
LNAV MDA	500/24	406 (500-½)	500/40	406 (500-¾)
CIRCLING	600-1 501 (600-1)	660-1 561 (600-1)	660-1½ 561 (600-1½)	960-2¾ 861 (900-2¾)

ELEV 99 TDZE 94