

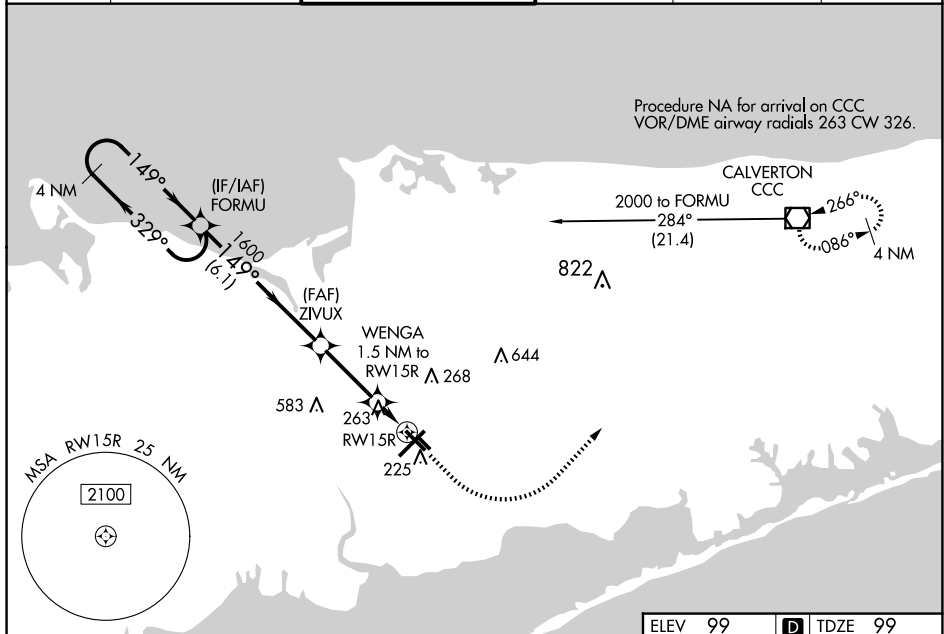
WAAS CH <b>53620</b> <b>W15A</b>	APP CRS <b>149°</b>	Rwy Idg <b>5186</b> TDZE <b>99</b> Apt Elev <b>99</b>
--	------------------------	---

RNAV (GPS) RWY 15R  
LONG ISLAND MAC ARTHUR (ISP)

**▼** Baro-VNAV NA when using Shirley altimeter setting. For uncompensated Baro-VNAV systems, procedure NA below -14°C (7°F) or above 46°C (115°F). DME/DME RNP-0.3 NA. When local altimeter setting not received, use Shirley altimeter setting and increase LPV DA to 442 feet, LNAV/VNAV DA to 575 feet and LNAV/VNAV visibility all Cats ½ mile; all MDAs 40 feet, LNAV Cats C/D visibility ½ mile, and Circling Cats C/D visibility ¼ mile. Helicopter visibility reduction below ¾ SM NA.

**MISSED APPROACH:** Climb to 600 then climbing left turn to 2000 direct CCC VOR/DME and hold.

ATIS 120.725	NEW YORK APP CON 120.05 343.75	LONG ISLAND TOWER* 119.3 (CTAF) 0335.5	GND CON 135.3	CLNC DEL 121.85	UNICOM 122.95
-----------------	-----------------------------------	---	------------------	--------------------	------------------



ELEV 99	<b>D</b>	TDZE 99
---------	----------	---------

