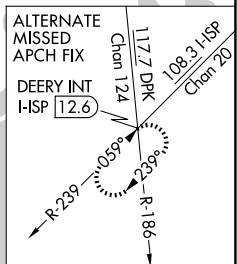


ILS or LOC RWY 6  
LONG ISLAND MAC ARTHUR (ISP)

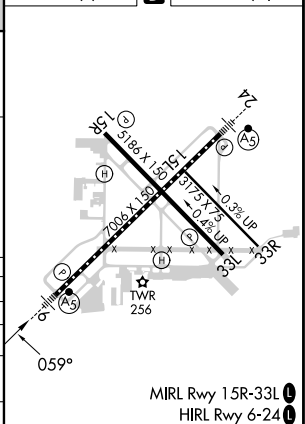
MALSR

**MISSED APPROACH:**  
Climb to 600 then  
climbing right turn to  
2000 direct CCC  
VOR/DME and hold.

CALVERTON  
114.55 CCC ::::  
Chan 92 (Y)



ELEV	99	<b>D</b>	TDZE	94
------	----	----------	------	----



FAF to MAP 4.6 NM					
Knots	60	90	120	150	180
Min:Sec	4:36	3:04	2:18	1:50	1:32

NE-2, 10 JUL 2025 to 07 AUG 2025

NE-2. 10 JUL 2025 to 07 AUG 2025