

LOC/DME I-SP	APP CRS	Rwy Idg	7006
108.3	059°	TDZE	94
Chan 20		Apt Elev	99

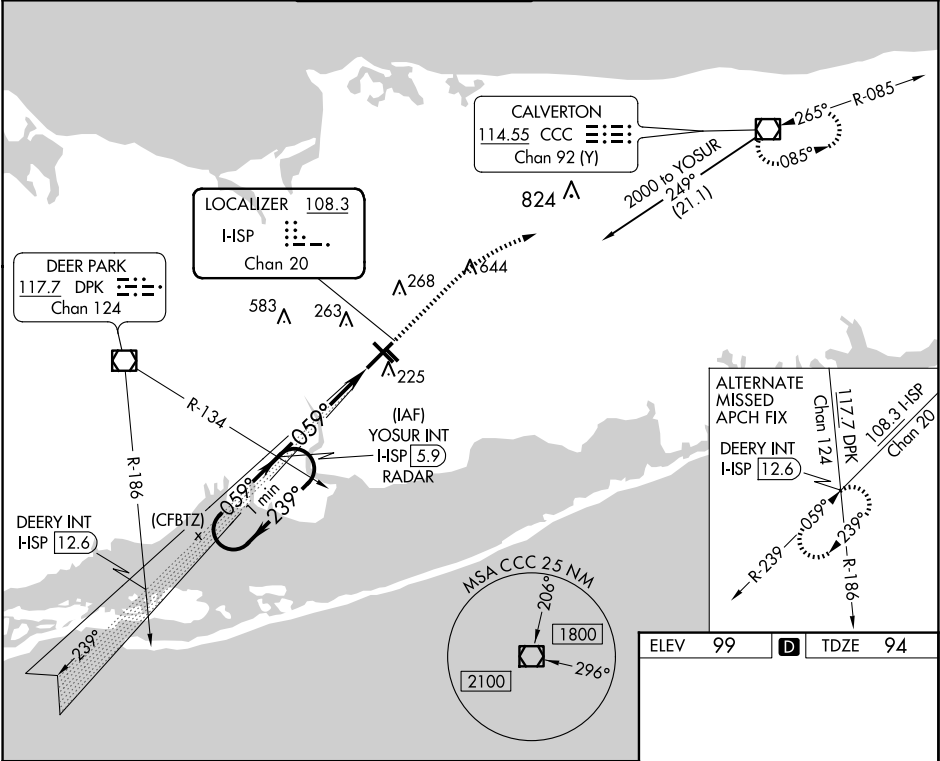
ILS RWY 6 (SA CAT I & II)
LONG ISLAND MAC ARTHUR (ISP)

Procedure NA when tower closed. SA CAT I: Requires specific OPSPEC, MSPEC, or LOA approval and use of HUD to DH.
SA CAT II: Reduced lighting: Requires specific OPSPEC, MSPEC, or LOA approval and use of autoland or HUD to touchdown.

MALSR

MISSED APPROACH: Climb to 600 then climbing right turn to 2000 direct CCC VOR/DME and hold.

ATIS	NEW YORK APP CON	LONG ISLAND TOWER*	GND CON	CLNC DEL	UNICOM
120.725	120.05 343.75	119.3 (CTAF) 335.5	135.3	121.85	122.95



One Minute Holding Pattern

YOSUR INT I-SP 5.9 RADAR

1600 1600 1600

239° 059° 059°

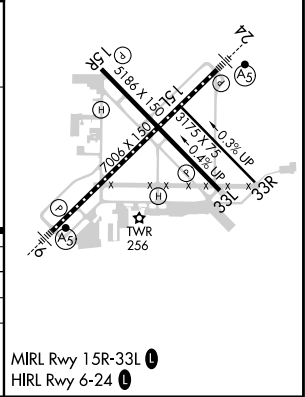
GS 3.00° TCH 52

4.6 NM 979'

600 2000 CCC

CATEGORY	A	B	C	D
S-ILS 6	SA CAT I RA 162/14 150 DA 244			
S-ILS 6	SA CAT II RA 111/12 100 DA 194			

SA CATEGORY I & II ILS SPECIAL AIRCREW & AIRCRAFT CERTIFICATION REQUIRED



NE-2, 10 JUL 2025 to 07 AUG 2025

NE-2, 10 JUL 2025 to 07 AUG 2025