

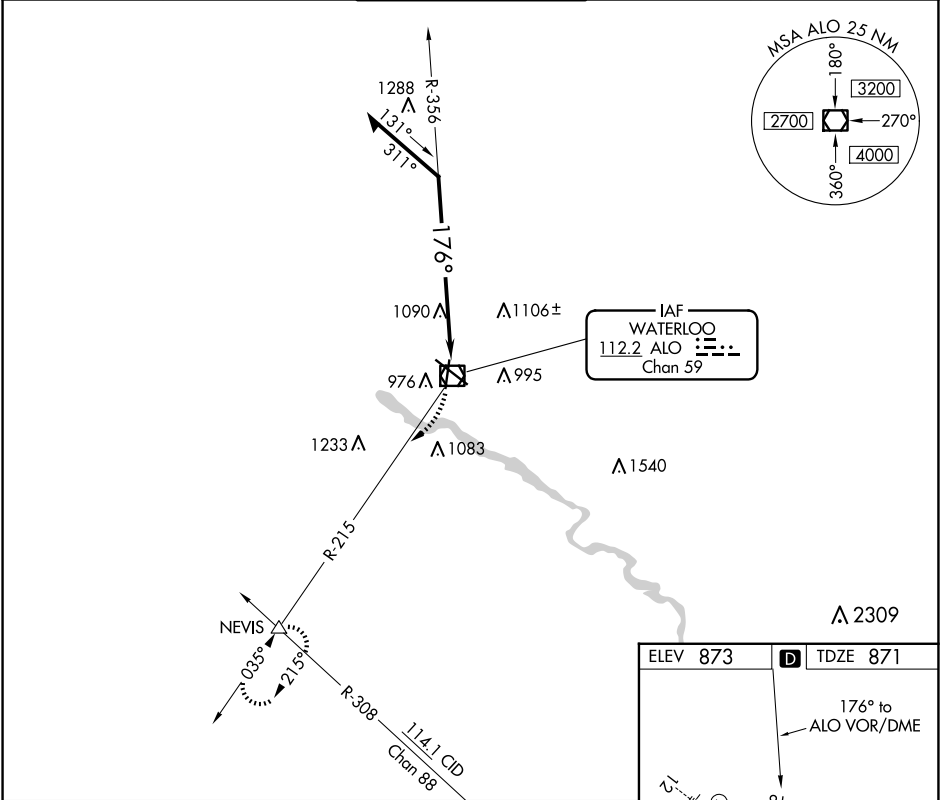
VOR/DME ALO	APP CRS	Rwy Idg	6003
112.2	176°	TDZE	871
Chan 59		Apt Elev	873

VOR RWY 18
WATERLOO RGNL (ALO)

⚠ Rwy 18 helicopter visibility reduction below ¾ SM NA.

MISSED APPROACH: Climbing right turn to 2800 on ALO VOR/DME R-215 to NEVIS INT and hold.

ATIS 120.65	WATERLOO APP CON ★ 118.9 251.15	WATERLOO TOWER ★ 125.075 (CTAF) 257.8	GND CON 121.9 269.1	UNICOM 122.95
----------------	------------------------------------	--	------------------------	------------------



Remain within 10 NM

2600

356°

176°

ALO 2.7

2.1 NM

2800

NEVIS

ALO R-215

CATEGORY	A	B	C	D
S-18	1600-1	729 (800-1)	1600-2	729 (800-2)
CIRCLING	1600-1	727 (800-1)	1600-2	1600-2¼
			727 (800-2)	727 (800-2¼)

ELEV 873

TDZE 871

176° to ALO VOR/DME

81

8392 X 150

6003 X 150

36

TWR 977

923

HIRL Rwy 12-30

MIRL Rwy 18-36

REIL Rwy 18 and 36

NC-3, 10 JUL 2025 to 07 AUG 2025

NC-3, 10 JUL 2025 to 07 AUG 2025