

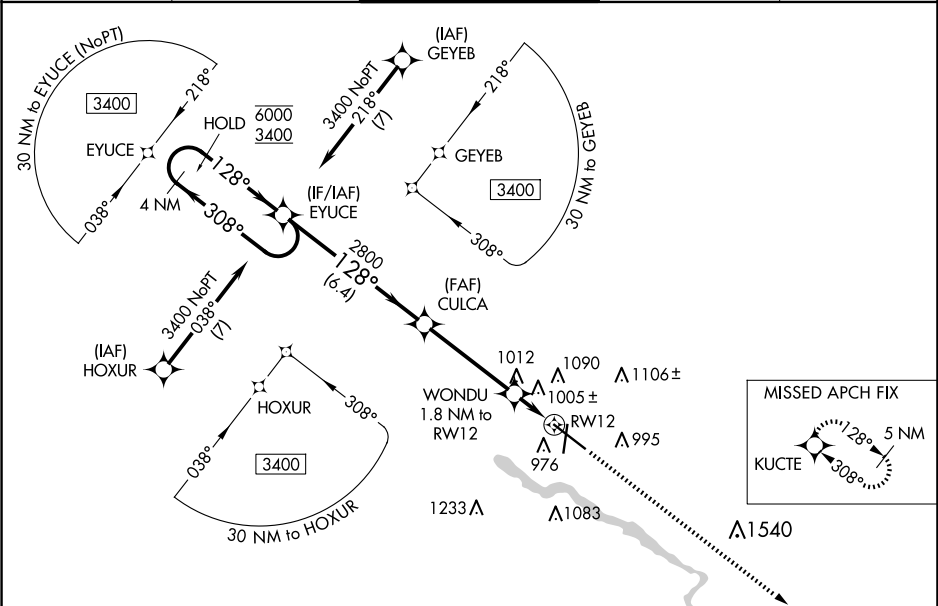
WAAS CH 72801 W12A	APP CRS 128°	Rwy Idg TDZE Apt Elev	8399 873 873
--	------------------------	-----------------------------	---

RNAV (GPS) RWY 12

WATERLOO RGNL (A.O)

RNP APCH.	<div><div>⚠</div><div>For uncompensated Baro-VNAV systems, LNAV/VNAV NA below -19°C or above 54°C. For inop ALS, increase LNAV/VNAV all Cats to RVR 5500. # RVR 1800 authorized with use of FD or AP or HUD to DA.</div></div>	<div><div>MALSR</div><div><div>⚠</div><div>⚠</div></div></div> <div>MISSED APPROACH: Climb to 3400 direct KUCTE and hold.</div>
-----------	--	---

ATIS 120.65	WATERLOO APP CON★ 118.9 251.15	WATERLOO TOWER★ 125.075 (CTAF) 0 257.8	GND CON 121.9 269.1	UNICOM 122.95
-----------------------	--	--	-------------------------------	-------------------------



					ELEV 873	D	TDZE 873
<div><div>4 NM Holding Pattern</div><div>EYUCE</div><div>CULCA</div><div>WONDU 1.8 NM to RW12</div><div>KUCTE</div><div>*LNAV only</div><div>GP 3.00° TCH 55</div><div>6.4 NM</div><div>4.1 NM</div><div>0.8 NM</div><div>1 NM</div></div>							
CATEGORY	A	B	C	D			
LPV DA#	1073/24 200 (200-½)						
LNAV/VNAV DA	1252/30 379 (400-¾)						
LNAV MDA	1260/24 387 (400-½)		1260/35 387 (400-¾)				
CIRCLING	1360-1 487 (500-1)	1400-1 527 (600-1)	1480-1¾ 607 (700-1¾)	1600-2¼ 727 (800-2¼)			
					<div>HIRL Rwy 12-30 0</div> <div>MIRL Rwy 18-36 0</div> <div>REIL Rwys 18 and 36</div>		