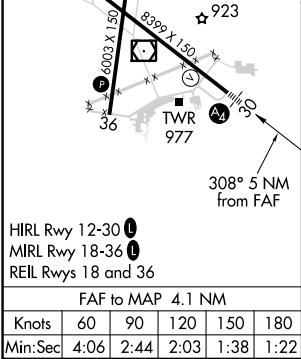
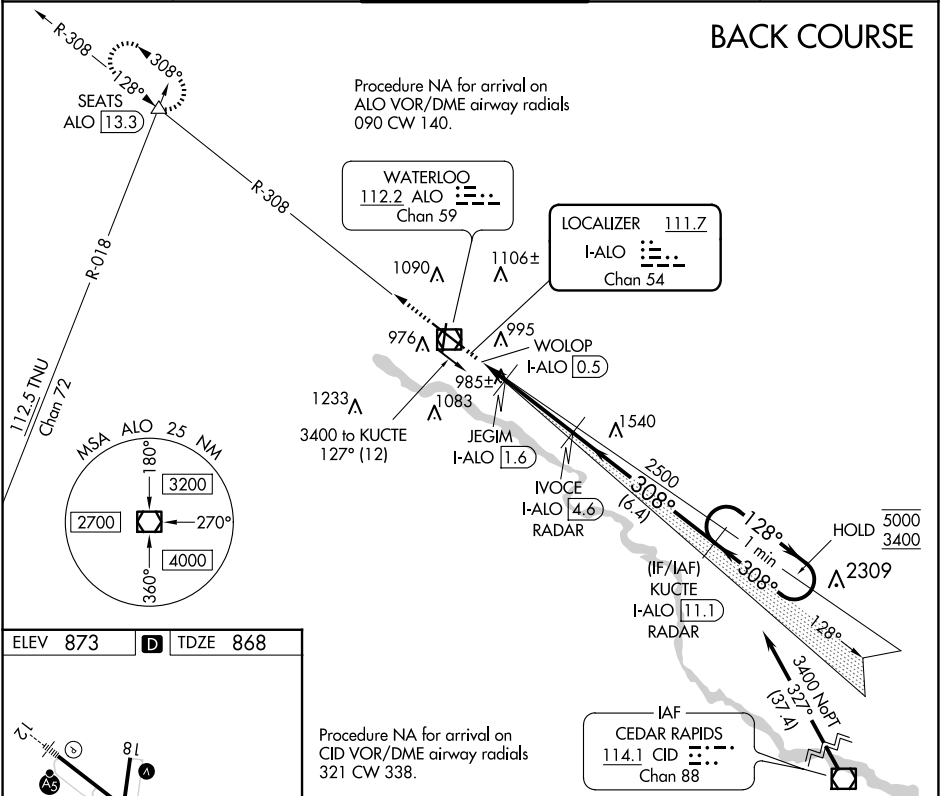


LOC/DME I-ALO 111.7 Chan 54	APP CRS 308°	Rwy Idg TDZE Apt Elev 8399 868 873
---	------------------------	--

LOC BC RWY 30
WATERLOO RGNL (ALO)

DME required.		MALS	MISSED APPROACH: Climb to 3500 on ALO VOR/DME R-308 to SEATS INT/ALO 13.3 DME and hold.	
ATIS 120.65	WATERLOO APP CON* 118.9 251.15	WATERLOO TOWER* 125.075 (CTAF) 0 257.8	GND CON 121.9 269.1	UNICOM 122.95



ELEV 873		TDZE 868
Procedure NA for arrival on CID VOR/DME airway radials 321 CW 338.		
3500 ↑ ALO R-308	SEATS △	Disregard glide slope indications.
I-ALO DME ANTENNA	JEGIM I-ALO 1.6	WOLOP I-ALO 0.5
308° 5 NM from FAF	IVOCE I-ALO 4.6	RADAR
308° 128°	308° 128°	308° 128°
1520	2500	5000
0.8 NM	1.1 NM	3.1 NM
6.4 NM		
CATEGORY	A	B
S-LOC 30	1240-3/4	372 (400-3/4)
CIRCLING	1360-1 487 (500-1)	1400-1 527 (600-1)
	1480-1 3/4 607 (700-1 3/4)	1600-2 1/4 727 (800-2 1/4)