

WAAS CH 90199 W28A	APP CRS 288°	Rwy Idg TDZE 341 Apt Elev 342
--	------------------------	---

RNAV (GPS) RWY 28

CAPE GIRARDEAU RGNL (CGI)

RNP APCH - GPS.

▼

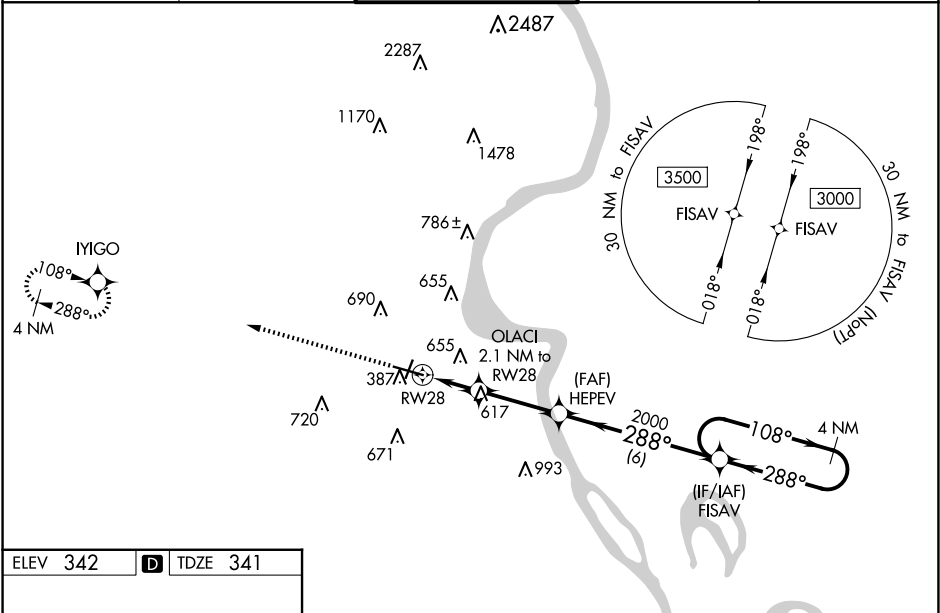
⚠

When local altimeter setting not received, use Cairo altimeter setting and increase LPV DA to 771 feet and all visibilities ½ SM. Increase LNAV/VNAV DA to 896 feet; increase all MDAs 60 feet and LNAV and Circling visibility Cats C/D ¼ SM. VDP NA when using Cairo Rgnl altimeter setting. Rwy 28 helicopter visibility reduction below ¾ SM NA. For inop ALS, increase LPV Cat A/B visibility to 1 ½ SM. Inop table does not apply to LNAV/VNAV all Cats. For inop ALS when using Cairo altimeter setting, increase LPV Cat A/B visibility to 1 ½ SM. Baro-VNAV NA.

ODALS

MISSED APPROACH:
Climb to 3000 direct
IYIGO and hold.

ASOS 120.55	MEMPHIS CENTER 133.65 292.15	CAPE GIRARDEAU TOWER ★ 125.525 (CTAF)	GND CON 124.7	UNICOM 122.95
-----------------------	--	---	-------------------------	-------------------------



ELEV 342 TDZE 341

MIRL Rwy 2-20
HIRL Rwy 10-28

	3000	IYIGO	HEPEV	FISAV	4 NM Holding Pattern
		OLACI 2.1 NM to RW28	2000		
		1.6 NM to RW28	1040	2000	
					GP 3.00° TCH 38
CATEGORY	A	B	C	D	
LPV DA	723-1 382 (400-1)				
LNAV/VNAV DA	848-1 507 (600-1 3/8)				
LNAV MDA	880-3/4	539 (600-3/4)	880-1 3/8	539 (600-1 3/8)	
CIRCLING	880-1 538 (600-1)	960-1 618 (700-1)	1000-1 3/4 658 (700-1 3/4)	1080-2 1/4 738 (800-2 1/4)	

NC-3, 10 JUL 2025 to 07 AUG 2025

NC-3, 10 JUL 2025 to 07 AUG 2025