

| | | |
|--|------------------------|---|
| WAAS CH 42832 W20A | APP CRS 203° | Rwy Idg TDZE 339 Apt Elev 342 |
|--|------------------------|---|

RNAV (GPS) RWY 20

CAPE GIRARDEAU RGNL (CGI)

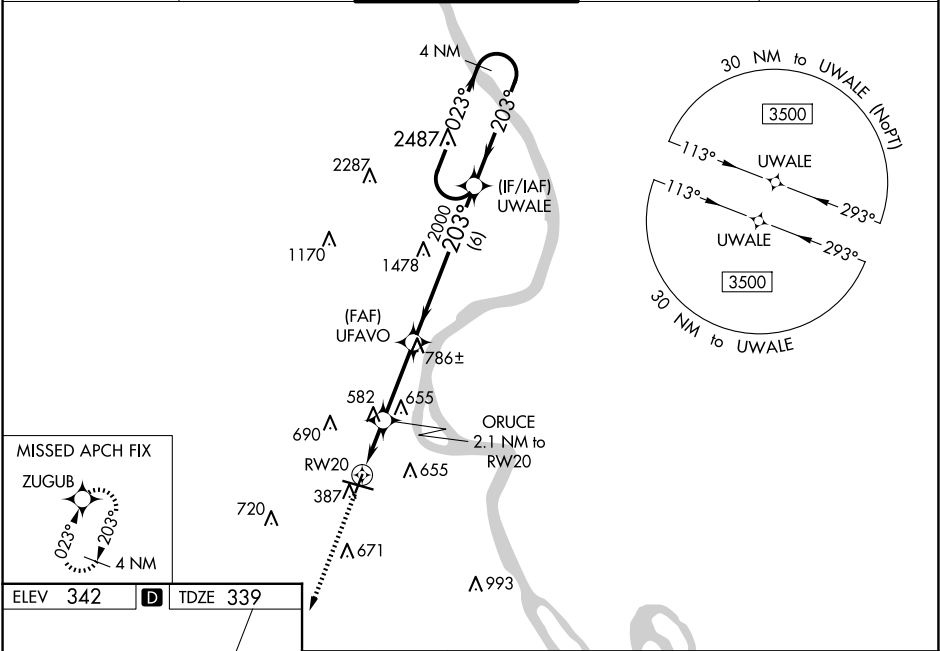
RNP APCH-GPS.

⚠

For uncompensated Baro-VNAV systems, LNAV/VNAV NA below -17°C or above 54°C. When local altimeter setting not received, use Cairo altimeter setting and increase LPV DA to 637 feet and all visibilities ½ SM; increase LNAV/VNAV DA to 652 feet; increase all MDAs 60 feet; increase LNAV and Circling visibility Cats C and D ¼ SM. Rwy 20 helicopter visibility reduction below ¾ SM NA. Baro-VNAV and VDP NA when using Cairo altimeter setting.

MISSED APPROACH: Climb to 3000 direct ZUGUB and hold.

| | | | | |
|-----------------------|--|--|-------------------------|-------------------------|
| ASOS 120.55 | MEMPHIS CENTER 133.65 292.15 | CAPE GIRARDEAU TOWER ★ 125.525 (CTAF) 0 | GND CON 124.7 | UNICOM 122.95 |
|-----------------------|--|--|-------------------------|-------------------------|



ELEV **342** **D** TDZE **339**

MIRL Rwy 2-20 **0**
HIRL Rwy 10-28 **0**

| | | | | | |
|--------------|----------------------|-------------------------|-------------------------------|-------------------------------|-----------------------|
| 3000 | ZUGUB | ORUCE 2.1 NM to RW20 | UFAVO | UWALE | 4 NM Holding Pattern |
| | | 1.4 NM to RW20 | 2000 | | 023° → 3500 ← 203° |
| | | 1040 | 2000 | | GP 3.00° TCH 43 |
| | | 1.4 NM | 0.7 | 3 NM | 6 NM |
| CATEGORY | A | B | C | D | |
| LPV DA | 589-1 | | 250 (300-1) | | |
| LNAV/VNAV DA | 604-1 | | 265 (300-1) | | |
| LNAV MDA | 840-1 | | 501 (500-1) | | |
| | 840-1 | | 501 (500-1 3/8) | | |
| CIRCLING | 860-1 518 (600-1) | 960-1 618 (700-1) | 1000-1 3/4 658 (700-1 3/4) | 1080-2 1/4 738 (800-2 1/4) | |

NC-3, 10 JUL 2025 to 07 AUG 2025

NC-3, 10 JUL 2025 to 07 AUG 2025