

WAAS CH 93832 W02A	APP CRS 023°	Rwy Idg 3997 TDZE 342 Apt Elev 342
--	------------------------	---

RNAV (GPS) RWY 2

CAPE GIRARDEAU RGNL (CGI)

RNP APCH - GPS.

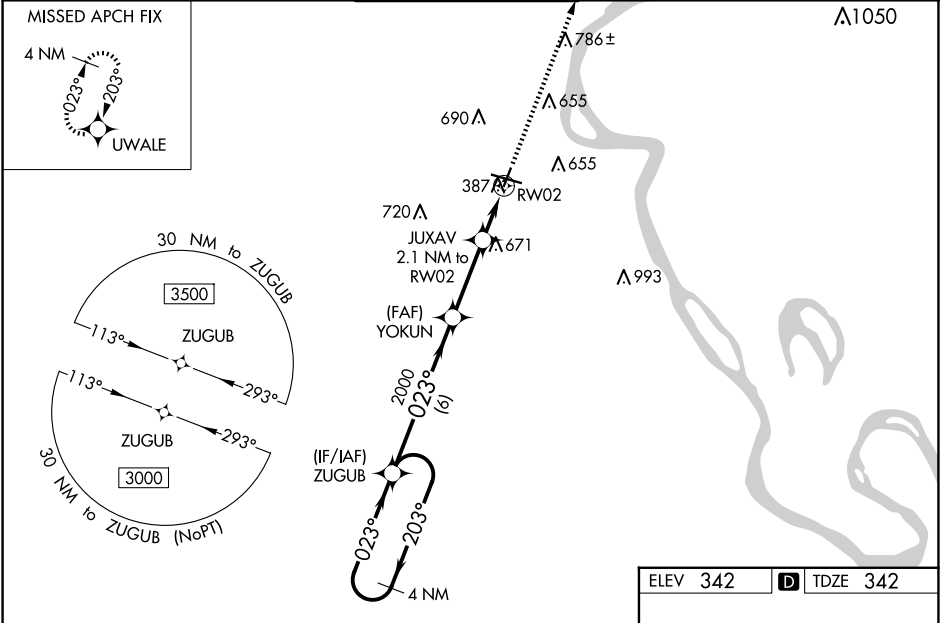
▼

⚠

For uncompensated Baro-VNAV systems, LNAV/VNAV NA below -17°C or above 54°C. When local altimeter setting not received, use Cairo altimeter setting and increase LPV DA to 849 feet, LNAV/VNAV DA to 905 feet, and all visibilities ¼ SM. Increase all MDAs 60 feet and LNAV visibility Cat C/D ⅛ SM, and Circling visibility Cat C/D ¼ SM. Rwy 2 helicopter visibility reduction below ¾ SM NA. Baro-VNAV and VDP NA when using Cairo Rgnl altimeter setting.

MISSED APPROACH: Climb to 3500 direct UWALE and hold, continue climb-in-hold to 3500.

ASOS 120.55	MEMPHIS CENTER 133.65 292.15	CAPE GIRARDEAU TOWER ★ 125.525 (CTAF) 0	GND CON 124.7	UNICOM 122.95
-----------------------	--	--	-------------------------	-------------------------



<div>4 NM Holding Pattern</div> <div>3000 ← 203° 023° →</div> <div>GP 3.00° TCH 40</div>		VGSI and RNAV glidepath not coincident (VGSI Angle 4.00/TCH 50).		3500	UWALE
		<div>ZUGUB</div> <div>YOKUN</div> <div>JUXAV 2.1 NM to RW02</div> <div>1.3 NM to RW02</div> <div>RW02</div>			
		<div>2000</div> <div>2000</div> <div>1040</div>			
		<div>6 NM</div> <div>3 NM</div> <div>0.8 NM</div> <div>1.3 NM</div>			
CATEGORY	A	B	C	D	
LPV DA	801-1⅜ 459 (500-1⅜)				
LNAV/VNAV DA	857-1⅜ 515 (600-1⅜)				
LNAV MDA	940-1 598 (600-1)		940-1¾ 598 (600-1¾)		
CIRCLING	940-1 598 (600-1)	960-1 618 (700-1)	1000-1¾ 658 (700-1¾)	1080-2¼ 738 (800-2¼)	