

TOP ALTITUDE:  
ASSIGNED BY ATC

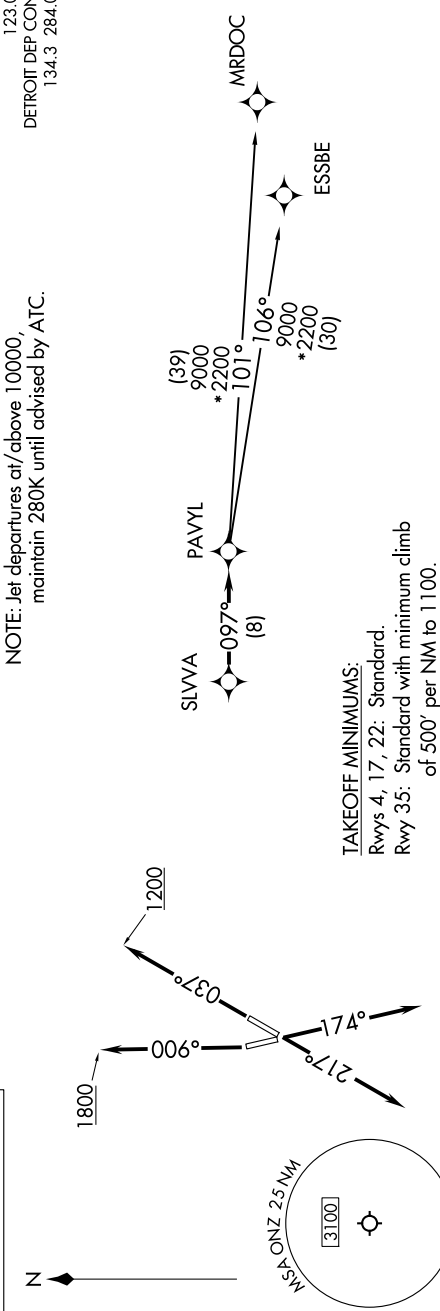
RNAV 1 - DME/DME/IRU or GPS.  
RADAR required.

(PAVYL3.PAVYL) 24137

PAVYL THREE DEPARTURE (RNAV)

AL-940 (FAA)

GROSSE ILE MUNI (0N1Z)  
DETROIT/GROSSE ILE, MICHIGAN



NOTE: Chart not to scale.

DEPARTURE ROUTE DESCRIPTION

- TAKEOFF RUNWAY 4: Climb on heading 037° to 1200 then as assigned by ATC, thence....
- TAKEOFF RUNWAY 17: Climb on heading 174° or as assigned by ATC, thence....
- TAKEOFF RUNWAY 22: Climb on heading 217° or as assigned by ATC, thence....
- TAKEOFF RUNWAY 35: Climb on heading 006° to 1800 then as assigned by ATC, thence....

....for RADAR vectors to SLVA, then on track 097° to PAVYL, then on (transition). Maintain 17000 or as assigned by ATC, expect filed altitude 10 minutes after departure.

ESSBE TRANSITION (PAVYL3 ESSBE):  
MRDOC TRANSITION (PAVYL3 MRDOC):

PAVYL THREE DEPARTURE (RNAV)  
(PAVYL3.PAVYL) 16MAY24

DETROIT/GROSSE ILE, MICHIGAN  
GROSSE ILE MUNI (0N1Z)