

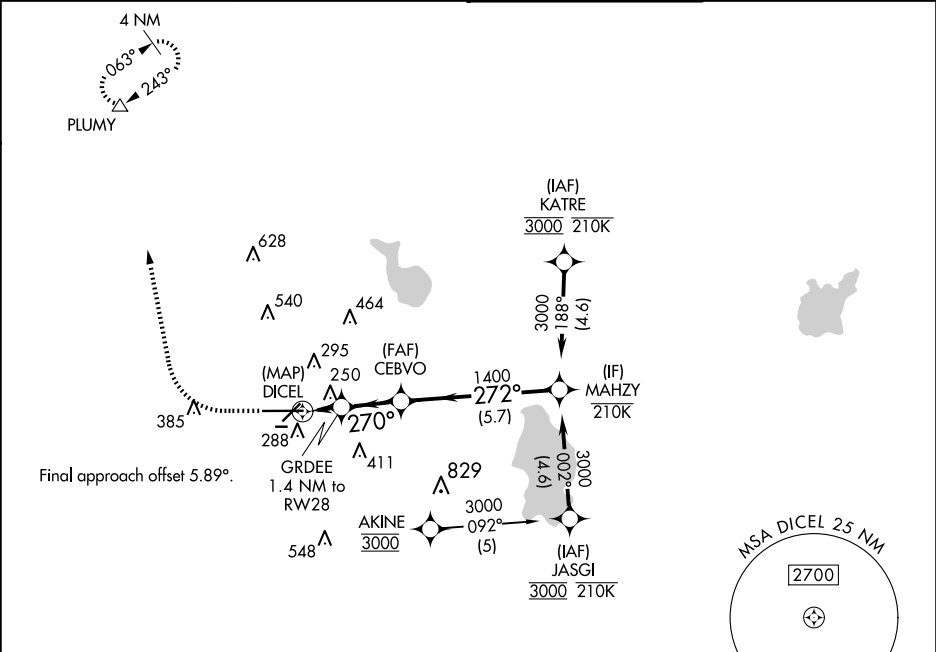
APP CRS	Rwy Idg	8500
270°	TDZE	142
	Apt Elev	142

RNAV (GPS) Y RWY 28

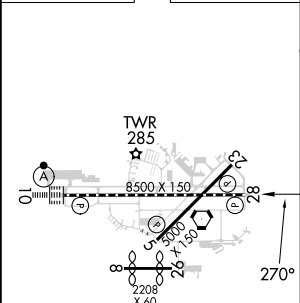
LAKELAND UNDER INTL (LAL)



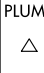
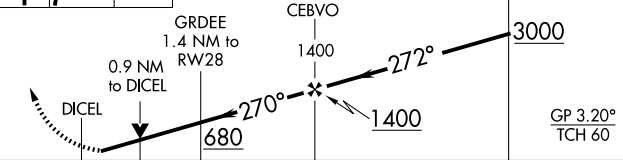
RNP APCH - GPS.	MISSED APPROACH: Climb to 600 then climbing right turn to 2000 direct PLUMY and hold.
<div><div></div><div>Circling Rwy 08, 26 NA. For uncompensated Baro-VNAV systems, LNAV/VNAV NA below -15°C or above 54°C. Rwy 28 helicopter visibility reduction below RVR 4000 NA.</div></div>	

ATIS 118.025	TAMPA APP CON 120.65 290.3	LAKELAND TOWER 124.5 236.775	GND CON 121.4
-----------------	-------------------------------	---------------------------------	------------------



ELEV 142	<b>D</b>	TDZE 142
----------	----------	----------



600	2000	PLUMY	VGSI and RNAV glidepath not coincident (VGSI Angle 3.00/TCH 71).			
						
CATEGORY	A		B		C	D
LNAV/ VNAV	DA		455/45		313 (400-7%)	
LNAV	MDA		500/55		358 (400-1)	
CIRCLING	600-1		458 (500-1)		720-1½ 578 (600-1½)	840-2¼ 698 (700-2¼)