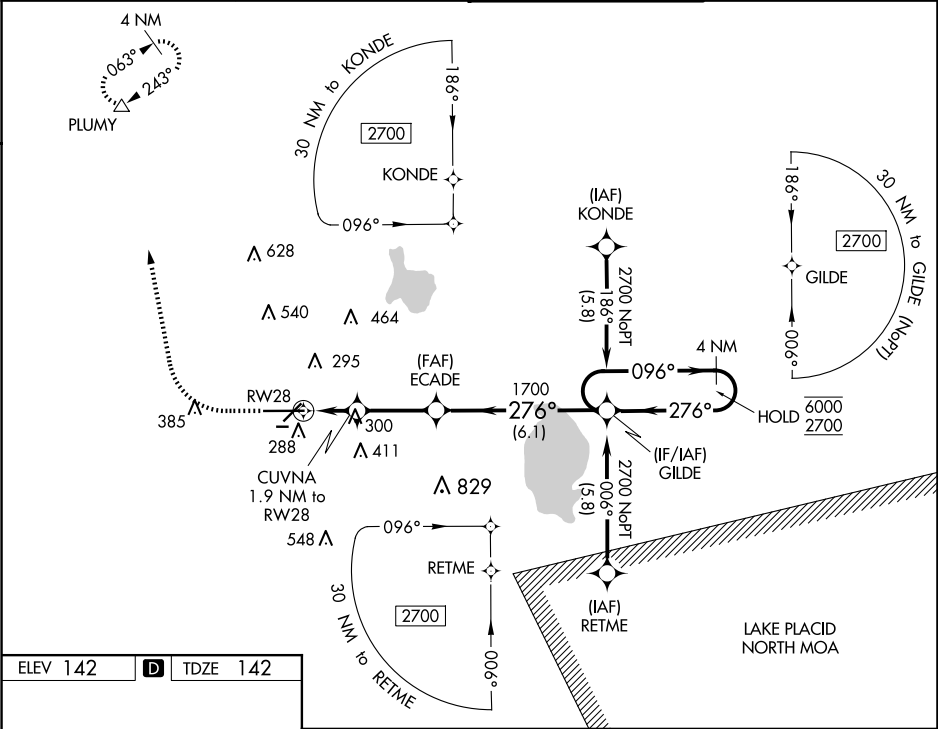


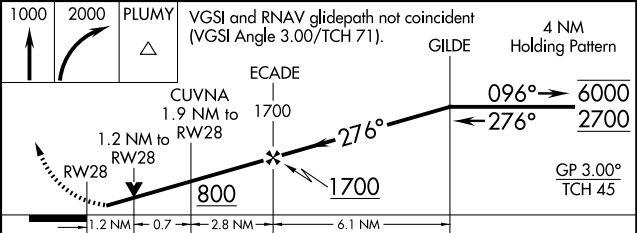
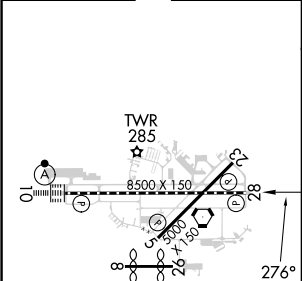
WAAS CH <b>82605</b> <b>W28A</b>	APP CRS <b>276°</b>	Rwy Idg TDZE <b>142</b> Apt Elev <b>142</b>
--	------------------------	---

RNAV (GPS) RWY 28  
LAKELAND UNDER INTL (LAL)

RNP APCH-GPS. ▼ Rwy 28 helicopter visibility reduction below RVR 4000 NA. ▲ For uncompensated Baro-VNAV systems, LNAV/VNAV NA below -15°C or above 54°C. Circling NA to Rwy 8 and 26.		MISSED APPROACH: Climb to 1000 then climbing right turn to 2000 direct PLUMY and hold.	
ATIS <b>118.025</b>	TAMPA APP CON <b>120.65 290.3</b>	LAKELAND TOWER <b>124.5 236.775</b>	GND CON <b>121.4</b>



ELEV 142	<b>D</b>	TDZE 142
----------	----------	----------



CATEGORY	A	B	C	D
LPV DA		392/40	250 (300-¾)	
LNAV/VNAV DA		525/60	383 (400-1¼)	
LNAV MDA	600/55	458 (500-1)	600-1¾ 458 (500-1¾)	
<b>C</b> CIRCLING	600-1 458 (500-1)	660-1 518 (600-1)	720-1½ 578 (600-1½)	840-2¼ 698 (700-2¼)

TDZ/CL Rwy 10  
HIRL Rwy 5-23 and 10-28

SE-3, 10 JUL 2025 to 07 AUG 2025

SE-3, 10 JUL 2025 to 07 AUG 2025