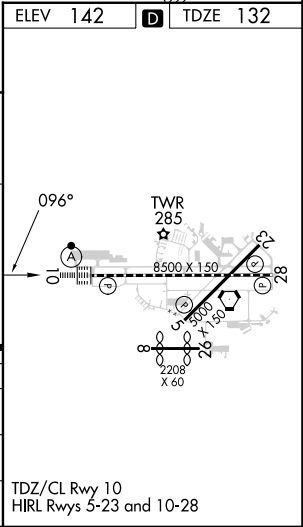
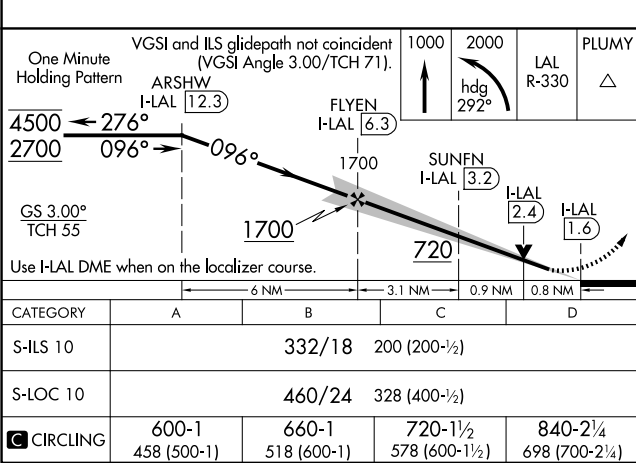
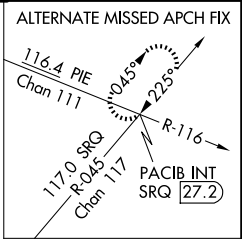
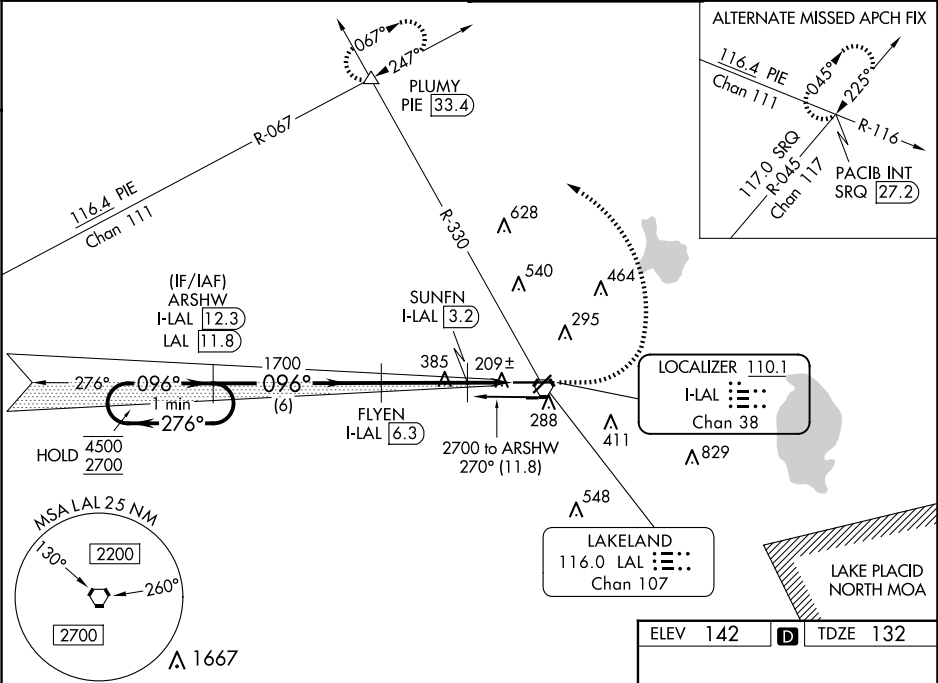


LOC/DME I-LAL <b>110.1</b> Chan <b>38</b>	APP CRS <b>096°</b>	Rwy Idg TDZE <b>132</b> Apt Elev <b>142</b>
---	------------------------	---

ILS or LOC RWY 10  
LAKELAND LINDER INTL (LAL)

DME required. Circling NA to Rwys 8 and 26.		ALSF-2 	MISSED APPROACH: Climb to 1000 then climbing left turn to 2000 on heading 292° and on LAL VORTAC R-330 to PLUMY INT/PIE 33.4 DME and hold.
ATIS <b>118.025</b>	TAMPA APP CON <b>120.65 290.3</b>	LAKELAND TOWER <b>124.5 236.775</b>	GND CON <b>121.4</b>



SE-3, 10 JUL 2025 to 07 AUG 2025

SE-3, 10 JUL 2025 to 07 AUG 2025