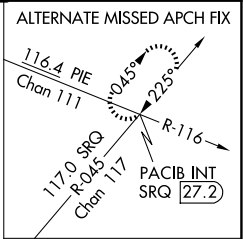
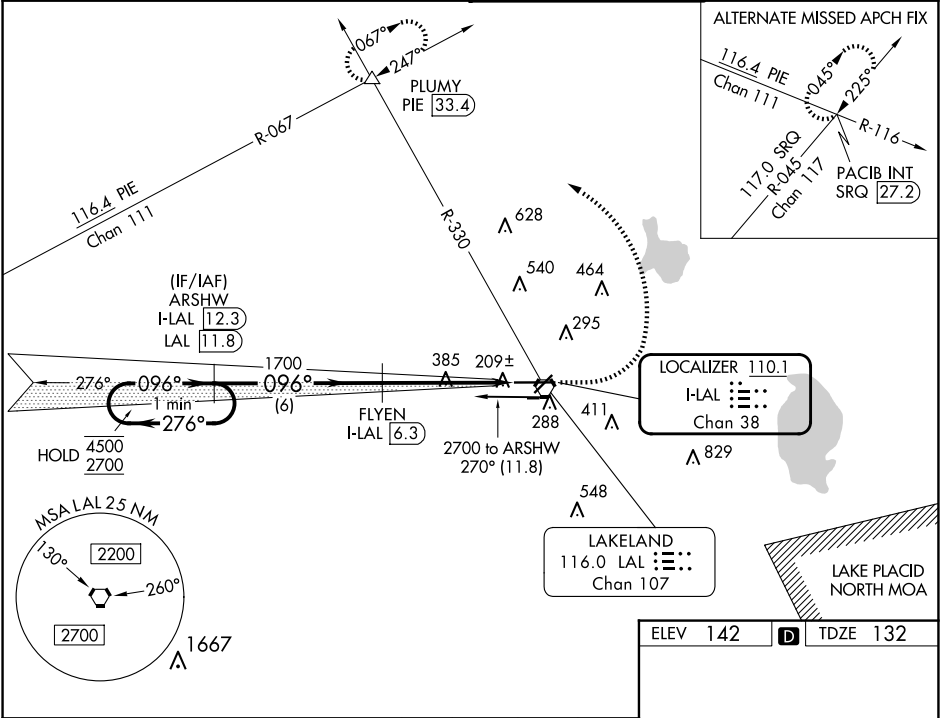


LOC/DME I-LAL <b>110.1</b> Chan <b>38</b>	APP CRS <b>096°</b>	Rwy Idg TDZE <b>132</b> Apt Elev <b>142</b>
---	------------------------	---

ILS RWY 10 ( CAT II & III)  
LAKELAND LINDER INTL (LAL)

DME required. 		ALSf-2 	MISSED APPROACH: Climb to 1000 then climbing left turn to 2000 on heading 292° and on LAL VORTAC R-330 to PLUMY INT/PIE 33.4 DME and hold.
ATIS <b>118.025</b>	TAMPA APP CON <b>120.65 290.3</b>	LAKELAND TOWER <b>124.5 236.775</b>	GND CON <b>121.4</b>



One Minute Holding Pattern

VGSI and ILS glidepath not coincident (VGSI Angle 3.00/TCH 71).

ARSHW I-LAL 12.3, FLYEN I-LAL 6.3

4500 2700 276° 096° 1700

GS 3.00° TCH 55

Use I-LAL DME when on the localizer course.

6 NM	4.8 NM	1.063'
------	--------	--------

CATEGORY	A	B	C	D
S-ILS 10	CAT II	RA 101/12	100	DA 232
S-ILS 10	CAT III	RVR 600		

**CATEGORY II & III ILS - SPECIAL AIRCREW & AIRCRAFT CERTIFICATION REQUIRED**

ELEV 142 TDZE 132

TWR 285

8500 X 150

2208 X 60

TDZ/CL Rwy 10

HIRL Rwy 5-23 and 10-28

SE-3, 10 JUL 2025 to 07 AUG 2025

SE-3, 10 JUL 2025 to 07 AUG 2025