

LOC I-JVL <b><u>109.1</u></b>	APP CRS <b>044°</b>	Rwy Idg TDZE Apt Elev	<b>6701</b> <b>806</b> <b>808</b>
----------------------------------	------------------------	-----------------------------	---

ILS or LOC RWY 4  
SOUTHERN WISCONSIN RGNL (JVL)

DME required. RNP APCH - GPS.

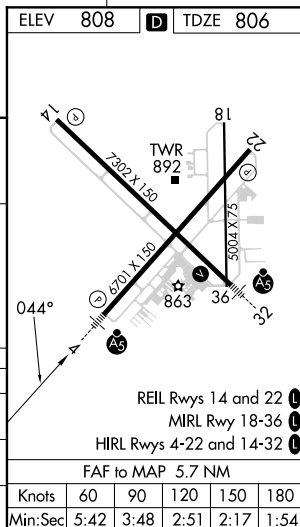
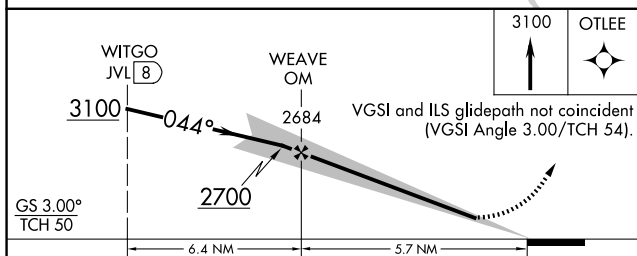
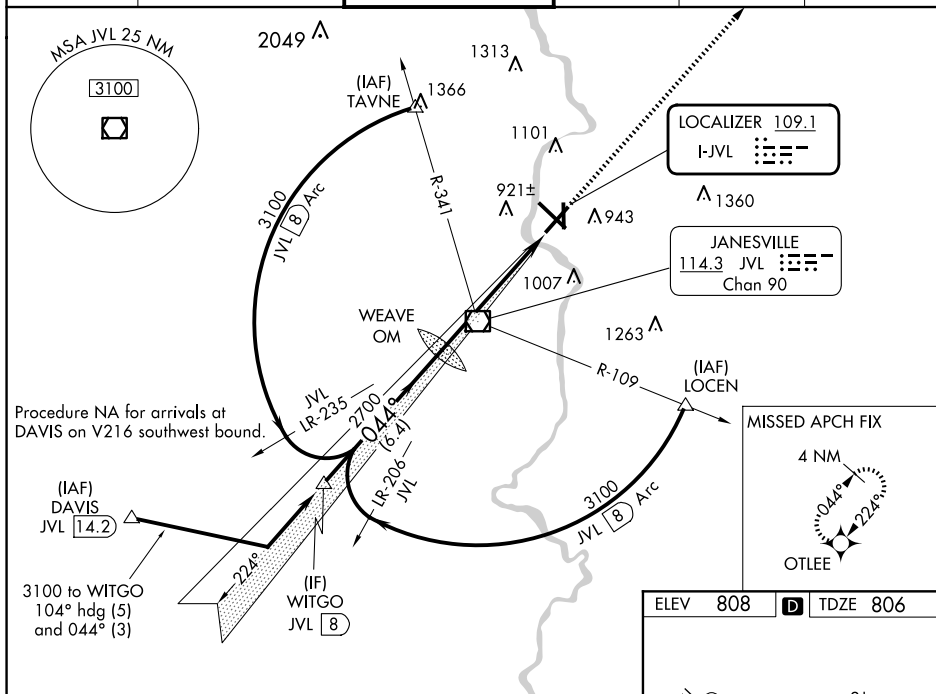
**T** When local altimeter setting not received, use Rockford altimeter setting and increase DA 69 feet and all MDAs 80 feet; increase S-LOC 4 Cats C/D and Circling Cats C/D  $\frac{1}{4}$  SM. For inop ALS when using Rockford altimeter setting; increase S-LS 4 all Cats visibility to  $\frac{1}{2}$  SM and S-LOC 4 Cats C/D visibility to  $\frac{1}{2}$  SM. Circling Rwy 18 NA at night. DME from JVL VOR/DME. DME use requires simultaneous reception of I-JVL and JVL VOR/DME.

MALSR

**MISSED APPROACH:**  
Climb to 3100 direct  
OTLEE and hold.

ATIS <b>128.25</b>	ROCKFORD APP CON <b>121.0 327.0</b>	JANESVILLE TOWER ★ <b>118.8(CTAF) 0 225.4</b>	GND CON <b>121.65</b>	CLNC DEL <b>121.65</b>	UNICOM <b>122.95</b>
-----------------------	--	--	--------------------------	---------------------------	-------------------------



CATEGORY	A	B	C	D
S-ILS 4	1006-1/2 200 (200-1/2)			
S-LOC 4	1400-1/2 594 (600-1/2)	1400-1 594 (600-1)	1400-1 1/4 594 (600-1 1/4)	
CIRCLING	1400-1 592 (600-1)	1420-1 3/4 612 (700-1 3/4)	1460-2 652 (700-2)	