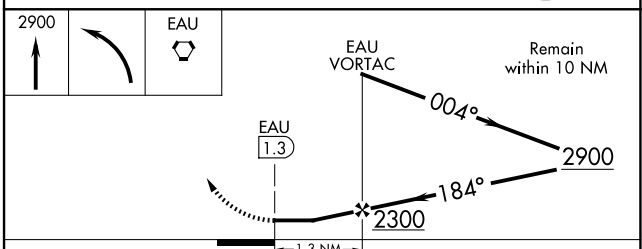
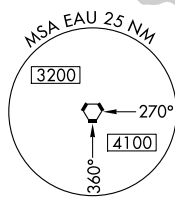
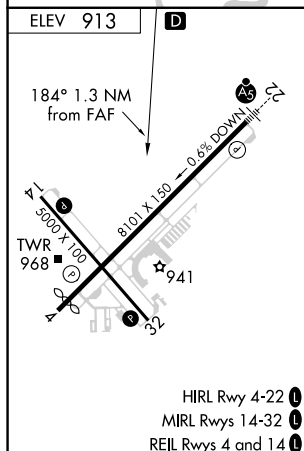
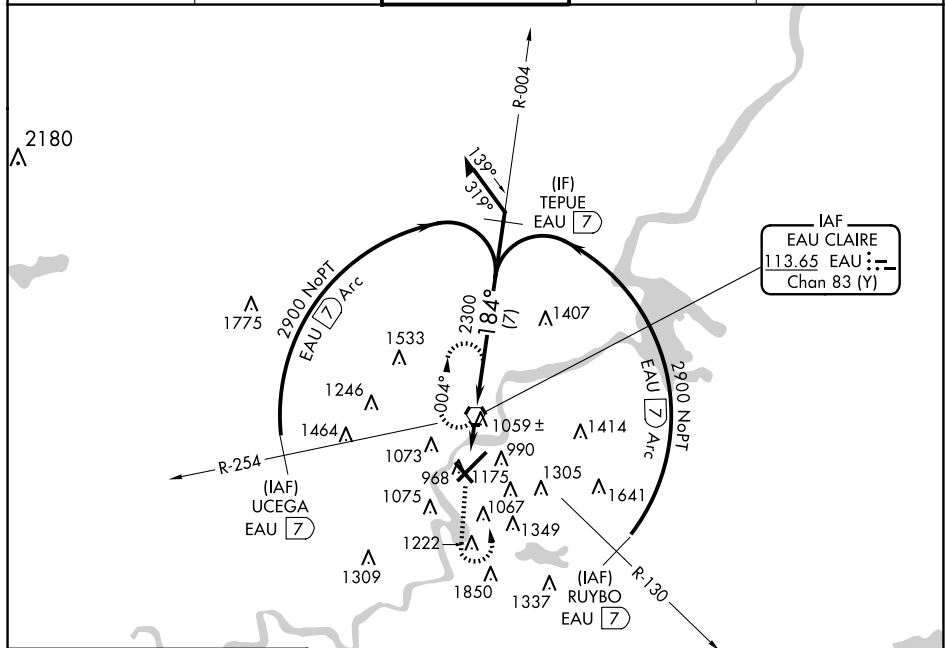


22111

VOR-A  
CHIPPEWA VALLEY RGNL (EAU)

**MISSED APPROACH:** Climb to 2900 then left turn direct EAU VORTAC and hold.

ATIS <b>126.025</b>	MINNEAPOLIS CENTER <b>125.3 335.6</b>	EAU CLAIRE TOWER ★ <b>118.575 (CTAF) 0</b>	GND CON <b>120.925</b>	UNICOM <b>122.95</b>
------------------------	--	---	---------------------------	-------------------------



FAF to MAP 1.3 NM						CATEGORY	A	B	C	D
Knots	60	90	120	150	180	CIRCLING	1780-1	1780-1¼	1780-2½	2200-3
Min:Sec	1:18	0:52	0:39	0:31	0:26		867 (900-1)	867 (900-1¼)	867 (900-2½)	1287 (1300-3)

CHIPPEWA VALLEY RGNL(EAU)  
VOR-A

EC-3, 10 JUL 2025 to 07 AUG 2025