

WAAS CH <b>87006</b> <b>W22A</b>	APP CRS <b>224°</b>	Rwy Idg <b>7301</b> TDZE <b>913</b> Apt Elev <b>913</b>
--	------------------------	---

RNAV (GPS) RWY 22  
CHIPPEWA VALLEY RGNL (EAU)

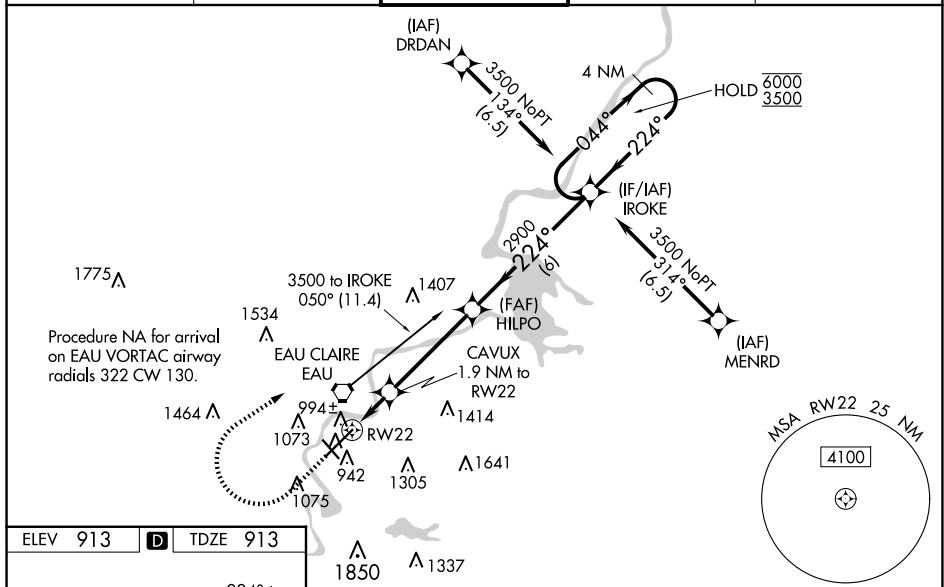
RNP APCH.

**T** Baro-VNAV and VDP NA when using Rice Lake altimeter setting. For uncompensated Baro-VNAV systems, LNAV/VNAV NA below -20°C or above 54°C. When local altimeter setting not received, use Rice Lake altimeter setting and increase LPV DA to 1223, LNAV/VNAV DA to 1285, and increase LNAV/VNAV visibility all Cats ¼ SM; increase all MDA 120 feet and LNAV Cats C/D visibility ¾ SM and Circling Cat C visibility ¼ SM. For inop ALS increase LNAV/VNAV visibility all Cats to ¾ SM and LNAV Cats C/D visibility to 1 SM. For inop ALS when using Rice Lake altimeter setting increase LPV visibility all Cats to 1 SM and LNAV Cats C/D visibility to 1 ¾ SM.

MALSR

**MISSED APPROACH:**  
Climb to 1320 then  
climbing right turn to  
3500 direct IROKE  
and hold.

ATIS <b>126.025</b>	MINNEAPOLIS CENTER <b>125.3 335.6</b>	EAU CLAIRE TOWER ★ <b>118.575 (CTAF) 0</b>	GND CON <b>120.925</b>	UNICOM <b>122.95</b>
------------------------	--	---	---------------------------	-------------------------



The diagram illustrates the IROKE Holding Pattern and associated navigation information:

- Holding Pattern:** A 4 NM Holding Pattern at 2900 feet. The pattern consists of two parallel legs separated by 224°. The inbound leg is 044° and the outbound leg is 224°.
- Navigation Points:**
  - Cavut Point:** 1.9 NM to RW22, 0.9 NM to RW22.
  - Hilpo Point:** 2900 feet altitude, 4.2 NM from Cavut Point, 6 NM from the start of the holding pattern.
- Altitudes:**
  - MIRL Rwy 14-32:** 1480-1 MSL (567' MGL).
  - HIRL Rwy 4-22:** 1260-1/2 MSL (347' MGL).
  - REIL Rws 4 and 14:** 1260-5/8 MSL (347' MGL).
- Other Information:**
  - TWR 968:** Tower frequency.
  - GP 3.00° TCH 50:** Ground Proximity Warning System (GPWS) threshold.
  - Category D:** The holding pattern is categorized as Category D.

RNAV (GPS) RWY 22