

| | | | |
|----------------|-------------|----------|------------|
| LOC/DME I-EAU | APP CRS | Rwy Ldg | 7301 |
| 109.5 | 224° | TDZE | 913 |
| Chan 32 | | Apt Elev | 913 |

ILS or LOC RWY 22

CHIPPEWA VALLEY RGNL (EAU)

From DRDAN and MENRD RNAV-1 GPS required.
DME required.

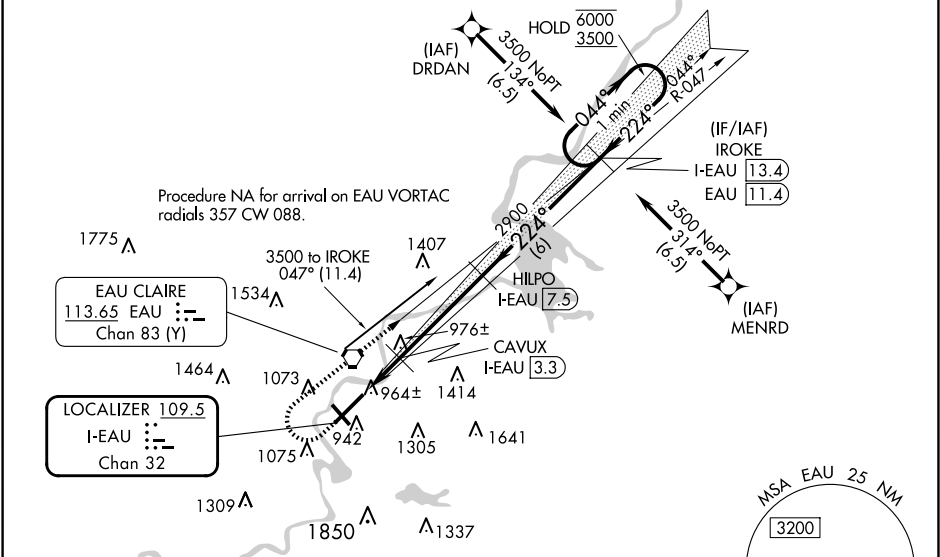
⚠

For inop ALS increase S-LOC 22 Cat C and D visibility to ¾ SM. For inop ALS when using Rice Lake altimeter setting, increase S-ILS 22 all Cats visibility to 1 SM. When local altimeter setting not received, use Rice Lake altimeter setting and increase DA 110 feet and all MDA 120 feet, increase S-LOC 22 Cat C and D and Circling Cat C visibility ¼ SM. VDP NA when using Rice Lake altimeter setting.

MALSR

MISSED APPROACH: Climb to 1600 then climbing right turn to 3500 on EAU VORTAC R-047 to IROKE/I-EAU LOC/DME 13.4 DME and hold.

| | | | | |
|------------------------|--|---|---------------------------|-------------------------|
| ATIS 126.025 | MINNEAPOLIS CENTER 125.3 335.6 | EAU CLAIRE TOWER ★ 118.575 (CTAF) 0 | GND CON 120.925 | UNICOM 122.95 |
|------------------------|--|---|---------------------------|-------------------------|



ELEV 913

D

TDZE 913

HIRL Rwy 4-22

MIRL Rwy 14-32

REIL Rwy 4 and 14

224°

TWR 968

941

FAF to MAP 6.1 NM

| | | | | | |
|---------|------|------|------|------|------|
| Knots | 60 | 90 | 120 | 150 | 180 |
| Min:Sec | 6:06 | 4:04 | 3:03 | 2:26 | 2:02 |

| | | | | | |
|------------|-----------------------|-----------------------|-------------------------|---|----------------------------|
| | 1600 | 3500 | IROKE I-EAU 13.4 | Use I-EAU DME when on the localizer course. | One Minute Holding Pattern |
| * LOC only | | | | | |
| | I-EAU 1.4 | * I-EAU 2.2 | CAVUX I-EAU 3.3 | HILPO I-EAU 7.5 | IROKE I-EAU 13.4 |
| | 0.8 | 1.1 NM | 4.2 NM | 6 NM | |
| CATEGORY | A | B | C | D | |
| S-ILS 22 | 1113-½ | 200 (200-½) | | | |
| S-LOC 22 | 1220-½ | 307 (400-½) | | | |
| CIRCLING | 1480-1 567 (600-1) | 1540-1 627 (700-1) | 1660-2¼ 747 (800-2¼) | 2200-3 1287 (1300-3) | |

EC-3, 10 JUL 2025 to 07 AUG 2025

EC-3, 10 JUL 2025 to 07 AUG 2025