



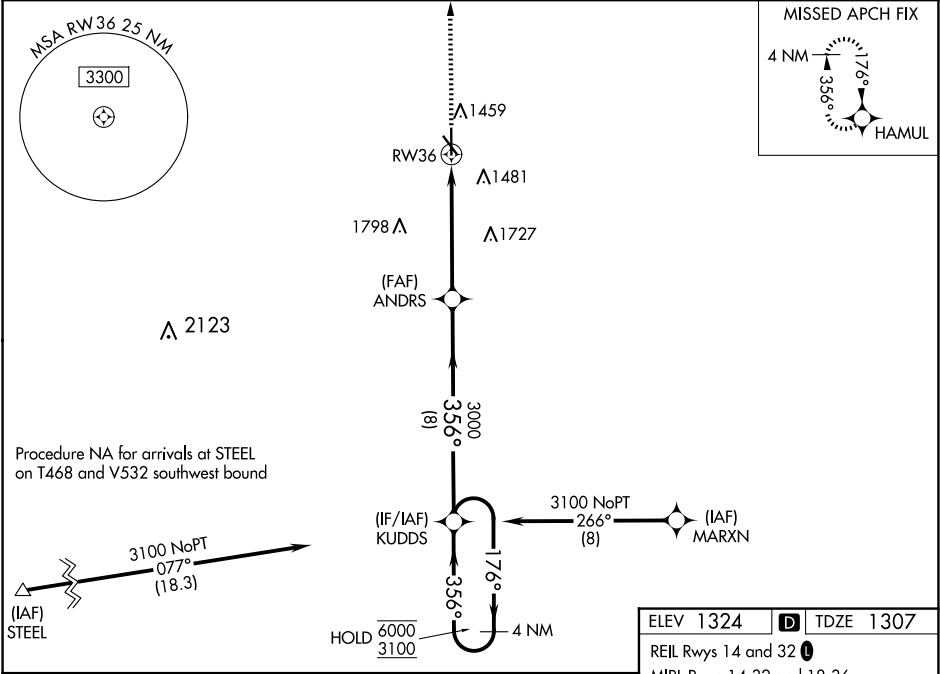
WAAS CH 61099 W36A	APP CRS 356°	Rwy Idg TDZE 1307 Apt Elev 1324
--	------------------------	---

RNAV (GPS) RWY 36

BEATRICE MUNI (BIE)

RNP APCH - GPS.		MALSR 	MISSED APPROACH: Climb to 3900 direct HAMUL and hold.
	For uncompensated Baro-VNAV systems, LNAV/VNAV NA below -17°C or above 54°C. When ALS inop increase LNAV Cats A/B to 1 SM. Inop table does not apply to LPV and LNAV/VNAV all Cats.		

AWOS-3 125.325	MINNEAPOLIS CENTER 126.4 317.7	UNICOM 122.8 (CTAF)
--------------------------	--	-------------------------------



3900

HAMUL

↑

✴

ANDRS

3000

1.5 NM to RW36

1.5 NM

3.7 NM

8 NM

KUDDIS

4 NM Holding Pattern

176° → 6000

← 356° 3100

GP 3.00°

TCH 41

3900

HAMUL

↑

✴

ANDRS

3000

1.5 NM to RW36

1.5 NM

3.7 NM

8 NM

KUDDIS

4 NM Holding Pattern

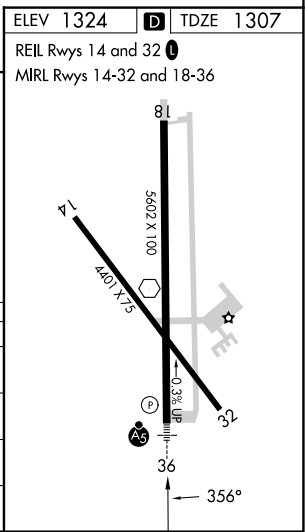
176° → 6000

← 356° 3100

GP 3.00°

TCH 41

CATEGORY	A	B	C	D
LPV DA	1507-¾ 200 (200-¾)			
LNAV/VNAV DA	1557-¾ 250 (300-¾)			
LNAV MDA	1840-¾ 533 (600-¾)	1840-1 533 (600-1)		
CIRCLING	1840-1 516 (600-1)	2000-2 676 (700-2)	2100-2½ 776 (800-2½)	



NC-2, 10 JUL 2025 to 07 AUG 2025

NC-2, 10 JUL 2025 to 07 AUG 2025