

VOR/DME	ATR	APP CRS	Rwy Idg	5331
112.6		234°	TDZE	51
Chan 73			Apt Elev	53

VOR RWY 22

DELAWARE COASTAL (GED)

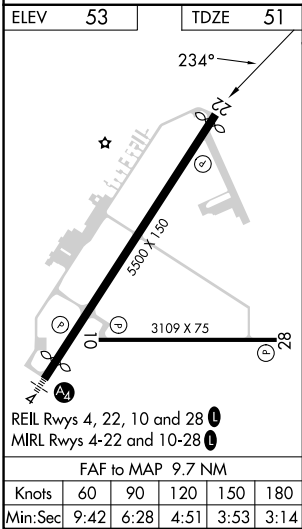
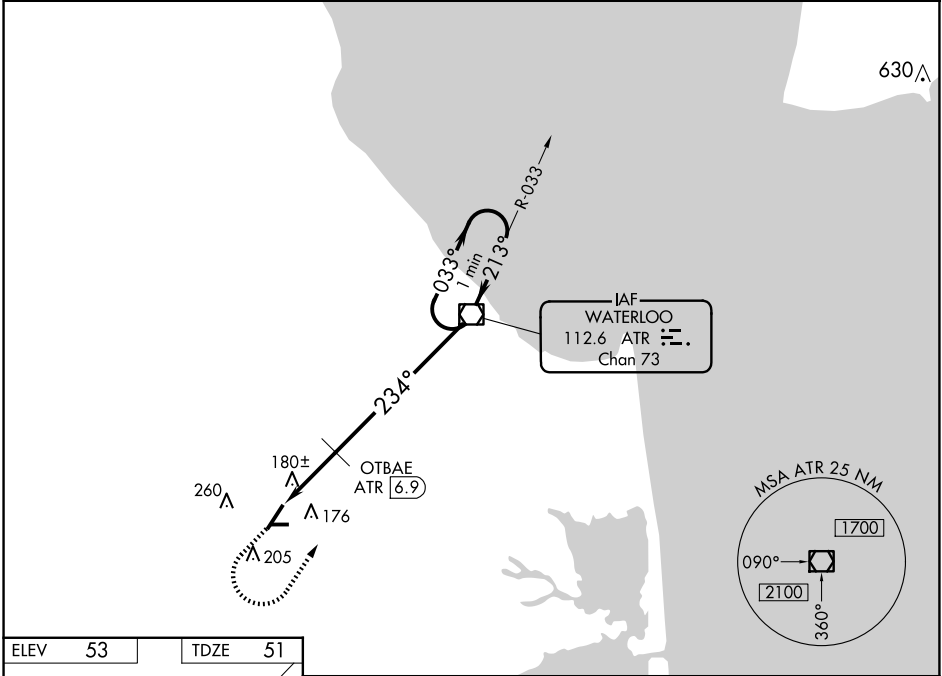
▼

▲

Rwy 22 helicopter visibility reduction below 1 SM NA.
Rwy 22 Straight-In and Circling minimums NA at night.

MISSED APPROACH: Climb to 800 then climbing left turn to 3000 direct ATR VOR/DME and hold.

ASOS	DOVER APP CON	GCO	UNICOM
118.375	132.425 257.875	125.55	123.0 (CTAF) 0



800	3000	ATR	VGSI and descent angles not coincident (VGSI Angle 3.00/TCH 45).	One Minute Holding Pattern
			ATR VOR/DME	
			OTBAE ATR 6.9	
			ATR 9.7	
			234°	033° → 3000
			680	← 213°
			2.83° TCH 52	
			2.8 NM	6.9 NM
CATEGORY	A	B	C	D
S-22	680-1	629 (700-1)	680-1 3/4	629 (700-1 3/4)
CIRCLING	680-1	627 (700-1)	720-1 3/4 667 (700-1 3/4)	720-2 667 (700-2)
OTBAE FIX MINIMUMS				
S-22	440-1	389 (400-1)	440-1 1/8	389 (400-1 1/8)
CIRCLING	560-1 507 (600-1)	580-1 527 (600-1)	720-1 3/4 667 (700-1 3/4)	720-2 667 (700-2)