

TACAN Y RWY 5R

TACAN NTU	APCH CRS	Rwy Idg
Chan 113	043°	TDZE 19
		Arprt Elev 22

[USN]

OCEANA NAS (APOLLO SOUCEK FLD) (KNTU)

▼ * When ALS inop, increase CAT AB vis to 1 mile, CAT CD vis to 1½ miles.

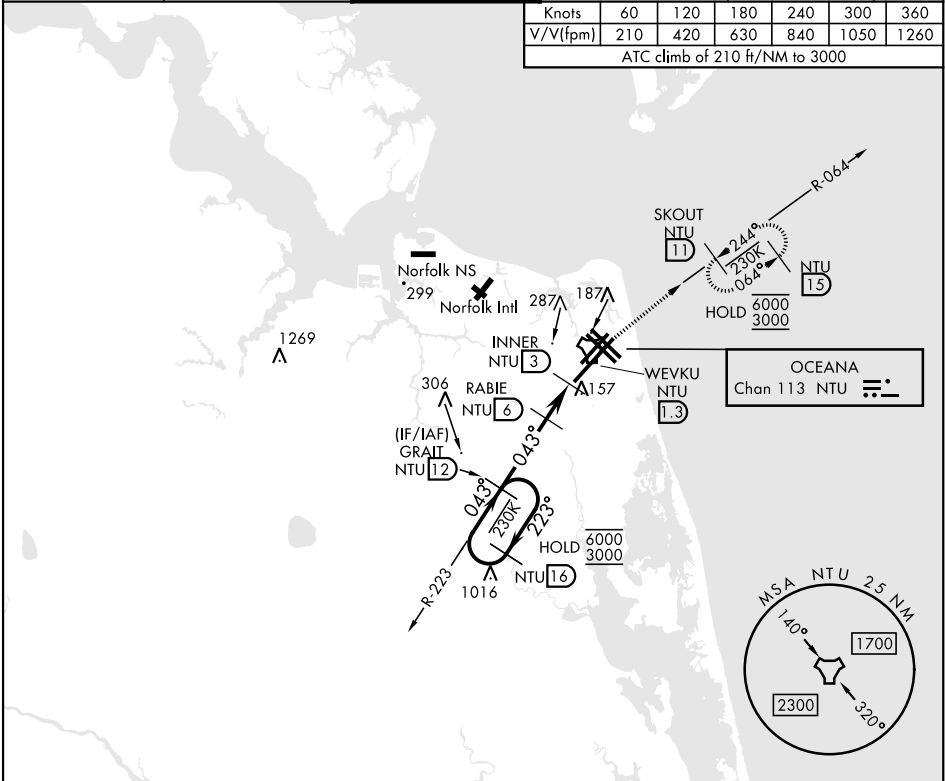
ALSF-1

(A1)

MISSED APPROACH: Climb to 3000 via R-223 to NTU TACAN then via R-064 to SKOUT and hold.

ATIS 317.6	APP/DEP CON 123.9 266.8	TOWER 127.075 360.2	GND CON 119.6 336.4	CLNC DEL 254.4	ASR/ PAR
------------	-------------------------	---------------------	---------------------	----------------	----------

Knots	60	120	180	240	300	360
V/V(fpm)	210	420	630	840	1050	1260
ATC climb of 210 ft/NM to 3000						



ELEV 22	TDZE 19
---------	---------

EMERG SAFE ALT 100 NM 6100

3000 NTU R-223

NTU

NTU R-064

NTU 16

GRAIT NTU 12

RABIE NTU 6

INNER NTU 3

NTU TACAN

WEVKU NTU 1.3

6000

3000

223°

043°

043°

1600

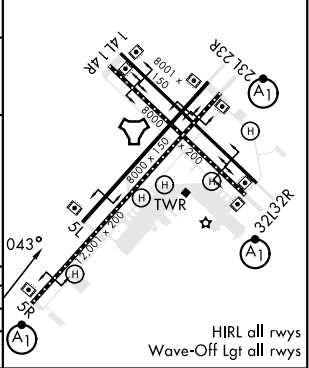
620

3.05° TCH 55

3 NM

1.7 NM

CATEGORY	A	B	C	D
S-5R *	420-½	401 (400-½)	420-¾	401 (400-¾)
CIRCLING	500-1	478 (500-1)	600-1½ 578 (600-1½)	600-2 578 (600-2)



TACAN Y RWY 5R

NE-3, 10 JUL 2025 to 07 AUG 2025

NE-3, 10 JUL 2025 to 07 AUG 2025