

TACAN NTU Chan 113	APCH CRS 309°	Rwy Idg 32L 8000 32R 8001
		TDZE 32L 22 Arpt Elev 22
		32R 20

[USN]

OCEANA NAS (APOLLO SOUCEK FLD) (KNTU)

TACAN Y RWY 32L/R

✦ * When ALS inop, increase CAT AB vis to 1 mile, CAT CD vis to 1¼ miles.

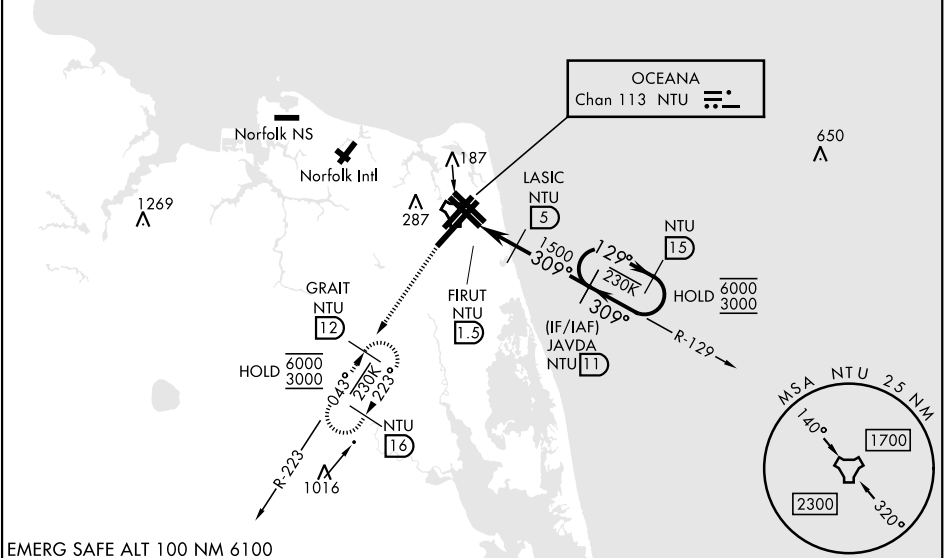
ALSF-1
A1

MISSED APPROACH: Climbing left turn to 3000, intercept NTU TACAN R-223 to GRAIT and hold.

ATIS 317.6	APP/DEP CON 123.9 266.8	TOWER 127.075 360.2	GND CON 119.6 336.4	CLNC DEL 254.4	ASR/ PAR
---------------	----------------------------	------------------------	------------------------	-------------------	-------------

Knots	60	120	180	240	300	360
V/V(fpm)	220	440	660	880	1100	1320
ATC climb of 220 ft/NM to 3000						

CAUTION:
Rwy 32L final approach crs 171° from rwy cntrln at 3000' from thld.
Rwy 32R final approach crs 528° from rwy cntrln at 3000' from thld.



EMERG SAFE ALT 100 NM 6100

3000 NTU R-223

GRAIT NTU 12

NTU TACAN

FIRUT NTU 1.5

LASIC NTU 5

JAVDA NTU 11

NTU 15

1500

3.5 NM

309°

129°

309°

6000 3000

3.31° TCH 55 Rwy 32L

3.33° TCH 55 Rwy 32R

ELEV 22

TDZE 32L 22

TDZE 32R 20

CATEGORY	A	B	C	D
S-32L *	460-½	438 (500-½)	460-¾	438 (500-¾)
S-32R	460-1	440 (500-1)	460-1¼	440 (500-1¼)
CIRCLING	500-1	478 (500-1)	600-1½ 578 (600-½)	600-2 578 (600-2)

HIRL all rwy's
Wave-Off lgt all rwy's

TACAN Y RWY 32L/R

NE-3, 10 JUL 2025 to 07 AUG 2025

NE-3, 10 JUL 2025 to 07 AUG 2025