

VIRGINIA BEACH, VIRGINIA

RNAV (GPS) RWY 23L

WAAS CH 67300 W23A	APCH CRS 232°	Rwy ldg TDZE Arprt Elev 22	12,001 21 22
--------------------------	------------------	-------------------------------	--------------------

- (USN)

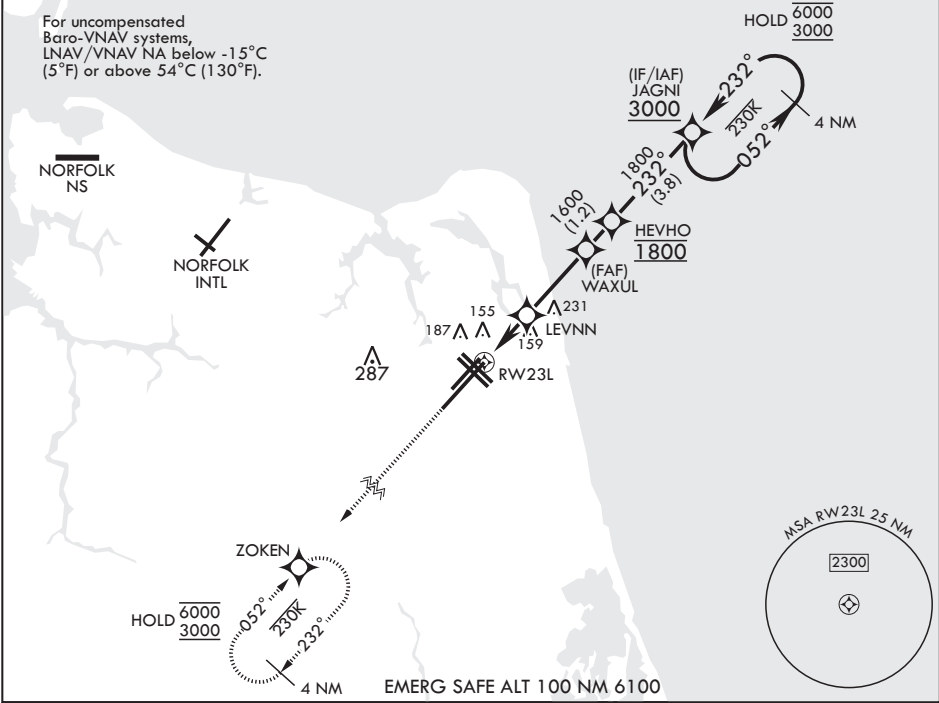
OCEANA NAS (APOLLO SOUCEK FLD) (KNTU)

RNP APCH-GPS	ALSIF-1	MISSED APPROACH: Climb to 3000 direct ZOKEN and hold.
▼ * When ALS inop, increase vis to 3/4 mile. ** When ALS inop, increase vis to 7/8 mile.	A1	

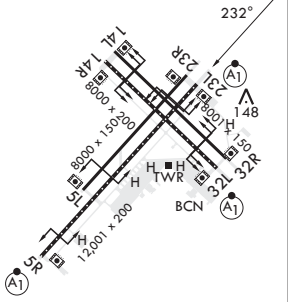
ATIS 317.6	APP CON/DEP CON 123.9 266.8	TOWER 127.075 360.2	GND CON 119.6 336.4	CLNC DEL 254.4	ASR/PAR
---------------	--------------------------------	------------------------	------------------------	-------------------	---------

*** When ALS inop, increase CAT AB vis to 1 mile; CAT CD vis to 1 1/8 miles.

For uncompensated Baro-VNAV systems, LNAV/VNAV NA below -15°C (5°F) or above 54°C (130°F).



3000	ZOKEN	JAGNI	4 NM Holding Pattern	ELEV 22	TDZE 21
↑	⊙	HEVHO	052° 6000 232° 3000		
RW23L	LEVNN	WAXUL	GP 3.00° TCH 55		
1.1 NM to RW23L	700	1600			
2 NM	2.8 NM				
CATEGORY	A	B	C	D	
LPV DA*	221-1/2	200	(200-1/2)		
LNAV/VNAV DA**	324-1/2	303	(400-1/2)		
LNAV MDA***	420-1/2	399 (400-1/2)	420-5/8 399 (400-5/8)		
CIRCLING	500-1	478 (500-1)	600-1 1/2 578 (600-1 1/2)	600-2 578 (600-2)	



VIRGINIA BEACH, VIRGINIA

36°49'N - 76°02'W OCEANA NAS (APOLLO SOUCEK FLD) (KNTU)

Amdt 5 12JUN25

RNAV (GPS) RWY 23L

NE-3, 10 JUL 2025 to 07 AUG 2025

NE-3, 10 JUL 2025 to 07 AUG 2025