

HI-TACAN Z RWY 5R

TACAN NTU Chan 113	APCH CRS 043°	Rwy Idg TDZE Arprt Elev 12,001 19 22
------------------------------	-------------------------	---

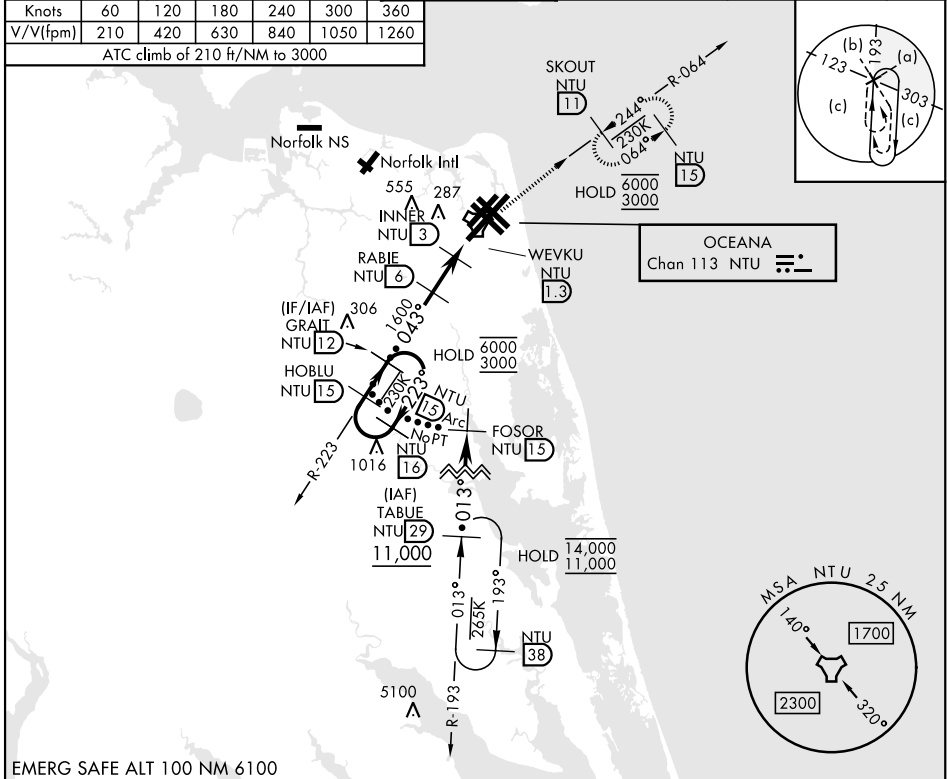
[USN]

OCEANA NAS (APOLLO SOUCEK FLD) (KNTU)

V * When ALS inop, increase CAT CDE vis to 1½ miles.			ALS-F-1 	MISSED APPROACH: Climb to 3000 via R-223 to NTU TACAN, then via R-064 to SKOUT and hold.	
ATIS 317.6	APP/DEP CON 123.9 266.8	TOWER 127.075 360.2	GND CON 119.6 336.4	CLNC DEL 254.4	ASR/ PAR

Knots	60	120	180	240	300	360
V/V(fpm)	210	420	630	840	1050	1260

ATC climb of 210 ft/NM to 3000



EMERG SAFE ALT 100 NM 6100

			ELEV 22	TDZE 19
CATEGORY	C	D	E	
S-5R *	420-¾ 401 (400-¾)			
CIRCLING	600-1½ 578 (600-1½)	600-2 578 (600-2)	900-3 878 (900-3)	

VIRGINIA BEACH, VIRGINIA

36° 49' N-76° 02' W

OCEANA NAS (APOLLO SOUCEK FLD) (KNTU)

Amtd 1 12JUN25

HI-TACAN Z RWY 5R

NE-3, 10 JUL 2025 to 07 AUG 2025