

# HI-TACAN Z RWY 23L/R

TACAN NTU Chan <b>113</b>	APCH CRS <b>244°</b>	Rwy Idg 23L <b>12,001</b> 23R <b>8000</b> TDZE 23L <b>21</b> 23R <b>20</b> Arpt Elev <b>22</b>
------------------------------	-------------------------	--

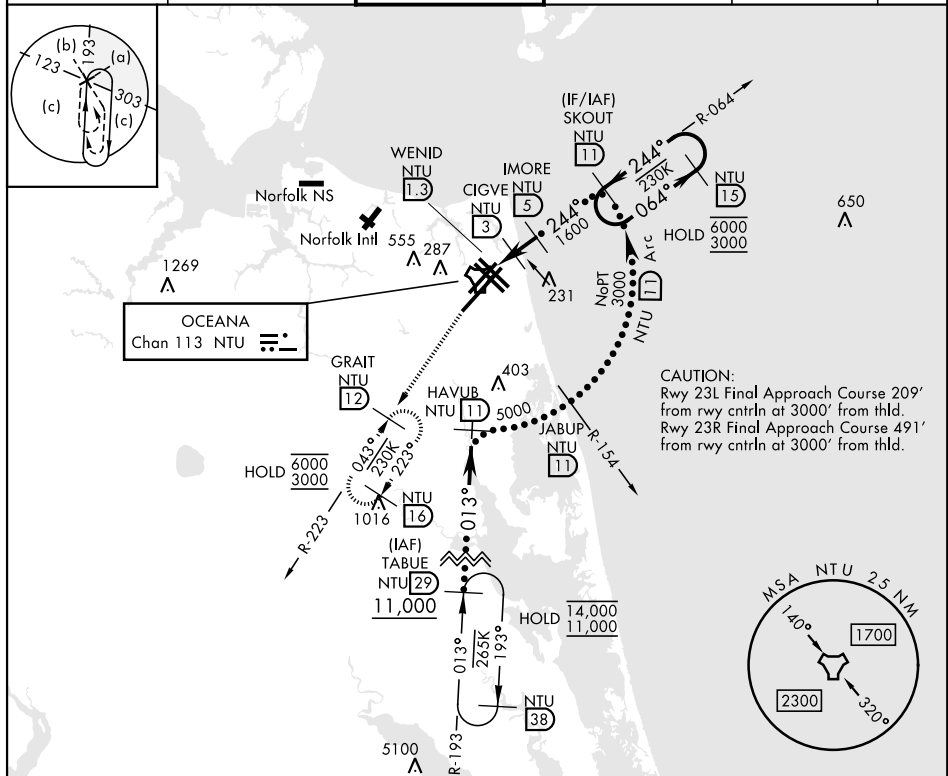
[USN]  
OCEANA NAS (APOLLO SOUCEK FLD) (KNTU)

**ALSF-1**

**\* When ALS inop, increase CAT CDE vis to 1½ miles**

**MISSED APPROACH:** Climb to 3000 via R-064 to NTU TACAN, then via R-223 to GRAIT and hold.

ATIS <b>317.6</b>	APP/DEP CON <b>123.9 266.8</b>	TOWER <b>127.075 360.2</b>	GND CON <b>119.6 336.4</b>	CLNC DEL <b>254.4</b>	ASR/ PAR
----------------------	-----------------------------------	-------------------------------	-------------------------------	--------------------------	-------------



**EMERG SAFE ALT 100 NM 6100**

NTU R-064, NTU R-223

NTU TACAN, WENID NTU 1.3, CIGVE NTU 3, IMORE NTU 5, SKOUT NTU 11, NTU 15

1.7 NM, 2 NM

840, 1600, 6000, 3000

3.39° TCH 55 Rwy 23L, 3.38° TCH 55 Rwy 23R

CATEGORY	C	D	E
S-23L*	440-¾	419 (500-¾)	
S-23R	440-1½	420 (500-1½)	
CIRCLING	600-1½ 578 (600-1½)	600-2 578 (600-2)	900-3 878 (900-3)

**ELEV 22**

**TDZE 23L 21**  
**TDZE 23R 20**

Diagram of runway layout with various lights and markers.

**HIRL all Rwy**  
**Wave-Off Lgt all Rwy**

# HI-TACAN Z RWY 23L/R