

|         |          |      |
|---------|----------|------|
| APP CRS | Rwy Idg  | 5320 |
| 046°    | TDZE     | 16   |
|         | Apt Elev | 17   |

RNAV (RNP) Z RWY 5

SOUTHWEST OREGON RGNL (OTH)

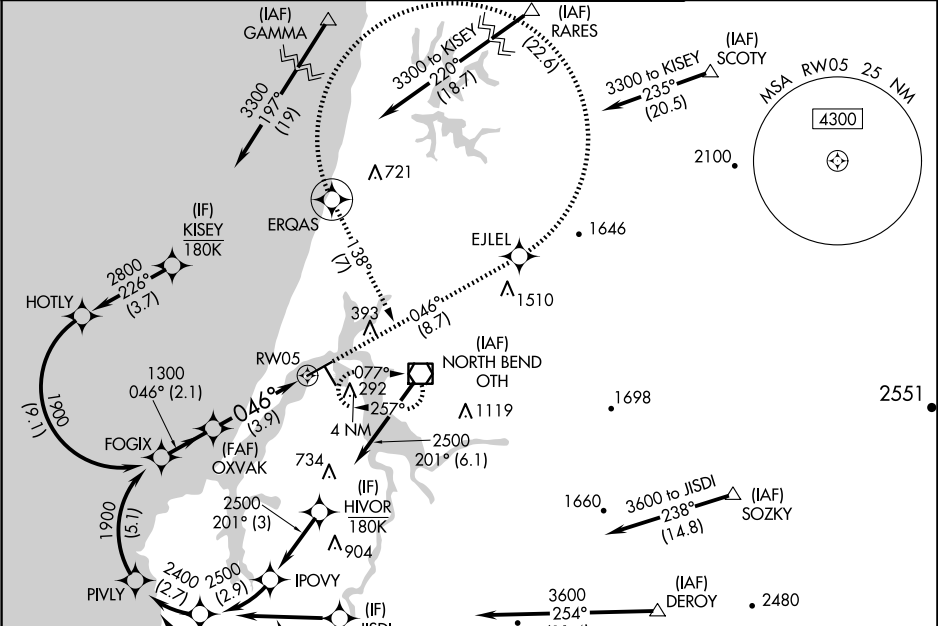
RNP AR APCH. RF required.

For inop ALS, increase \*RNP 0.11 all Cats visibility to 1 SM, #RNP 0.30 all Cats visibility to 1½ SM, and RNP 0.30 all Cats visibility to 1½ SM. For uncompensated Baro-VNAV systems, procedure NA below -2°C or above 54°C.

MALSR

MISSED APPROACH: Climb to 3300 on track 046° to EJLEL, left turn to ERQAS, and on track 138° to OTH VOR/DME and hold.  
\*Missed approach requires minimum climb of 400 feet per NM to 1200.  
#Missed approach requires minimum climb of 255 feet per NM to 2400.

|                     |                                 |                                      |                  |
|---------------------|---------------------------------|--------------------------------------|------------------|
| AWOS-3PT<br>135.075 | SEATTLE CENTER<br>127.55 254.35 | NORTH BEND TOWER*<br>118.45 (CTAF) 0 | GND CON<br>127.1 |
|---------------------|---------------------------------|--------------------------------------|------------------|



See planview for multiple IF locations.

FOGIX

1900

046°

GP 3.00°

TCH 51

2.1 NM

3.9 NM

3300

EJLEL

ERQAS

tr 138°

OTH

RW05

CATEGORY

A

B

C

D

RNP 0.11 DA\*

394-5/8

378 (400-5/8)

RNP 0.30 DA#

477-1 1/8

461 (500-1 1/8)

RNP 0.30 DA

569-1 3/8

553 (600-1 3/8)

AUTHORIZATION REQUIRED

ELEV 17

TDZE 16

HIRL Rwy 5-23

MIRL Rwy 13-31

REIL Rwys 13, 23 and 31