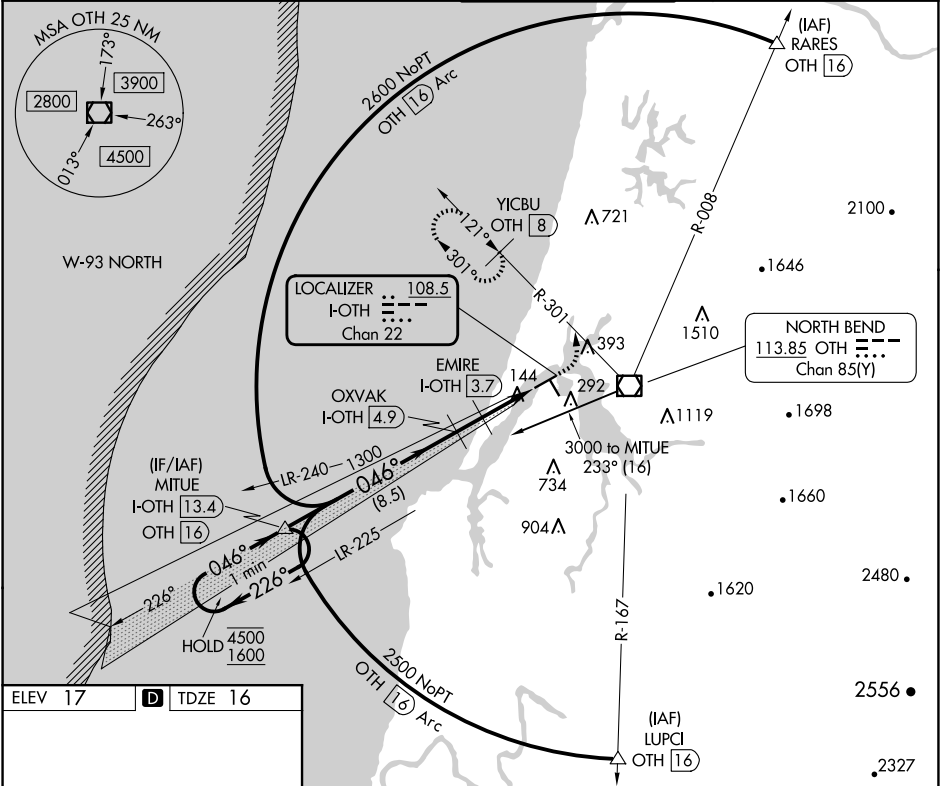


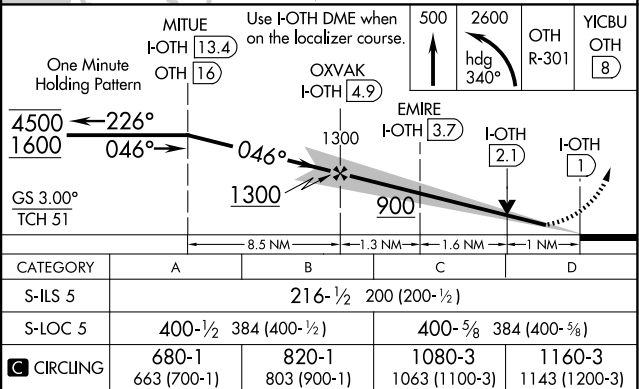
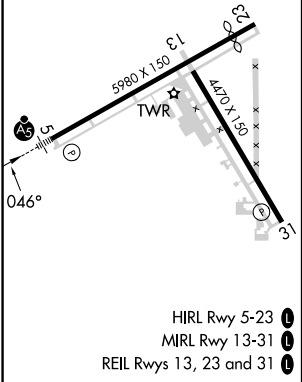
LOC/DME I-OTH	APP CRS	Rwy Idg	5320
<b>108.5</b>	<b>046°</b>	TDZE	<b>16</b>
Chan <b>22</b>		Apt Elev	<b>17</b>

ILS Z or LOC Z RWY 5  
SOUTHWEST OREGON RGNL (OTH)

DME required.	MALSR	MISSED APPROACH: Climb to 500 then climbing left turn to 2600 on heading 340° and OTH VOR/DME R-301 to YICBU/OTH 8 DME and hold, continue climb-in-hold to 2600.	
Circling Rwy 13, 31 NA at night.			
AWOS-3PT <b>135.075</b>	SEATTLE CENTER <b>127.55 254.35</b>	NORTH BEND TOWER* <b>118.45 (CTAF) 0</b>	GND CON <b>127.1</b>



ELEV 17	TDZE 16
---------	---------



NW-1, 10 JUL 2025 to 07 AUG 2025

NW-1, 10 JUL 2025 to 07 AUG 2025