

WAAS CH 65632 W11A	APP CRS 106°	Rwy Idg 5158 TDZE 319 Apt Elev 321
--	------------------------	---

RNAV (GPS) RWY 11
EASTERWOOD FLD (CLL)

RNP APCH.



For uncompensated Baro-VNAV systems, LNAV/VNAV NA below -3°C or above 54°C. Rwy 11 helicopter visibility reduction below $\frac{3}{4}$ SM NA.

MISSED APPROACH: Climb to 3000 direct EDAYA and hold.

ATIS 126.85	HOUSTON APP CON 134.3 360.85	EASTERWOOD TOWER ★ 118.5 (CTAF) 0 284.7	GND CON 128.7 284.7	CLNC DEL 128.7	CLNC DEL 120.4 (when twr closed)	UNICOM 122.95
-----------------------	--	---	-------------------------------	--------------------------	---	-------------------------

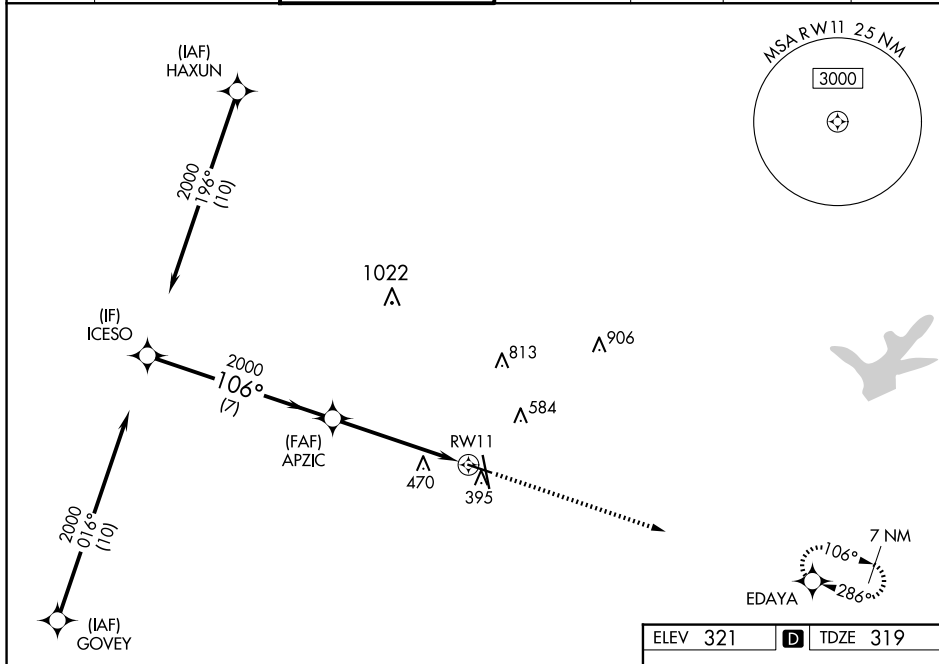


Diagram illustrating the 500-foot obstacle clearance area (OCA) for a 3.00° glide path. The diagram shows a 3.00° glide path from a 2000-foot MDA to a 500-foot obstacle. The OCA is defined by a 106° angle from the MDA to the obstacle. The distance from the MDA to the obstacle is 7 NM. The distance from the obstacle to the runway (RW11) is 3.9 NM. The distance from the obstacle to the runway is 1.2 NM. The diagram also shows the 1.2 NM to RW11 distance. The diagram includes a legend for '3000' (up arrow) and 'EDAYA' (star symbol). The diagram is labeled 'ICSO' and 'APZIC'.

