

LOC/DME I-CLL  
**110.55**  
Chan **42**(Y)

APP CRS  
**166°**

Rwy Idg  
TDZE  
Apt Elev  
**7000**  
**321**  
**321**

LOC BC RWY 17  
EASTERWOOD FLD (CLL)

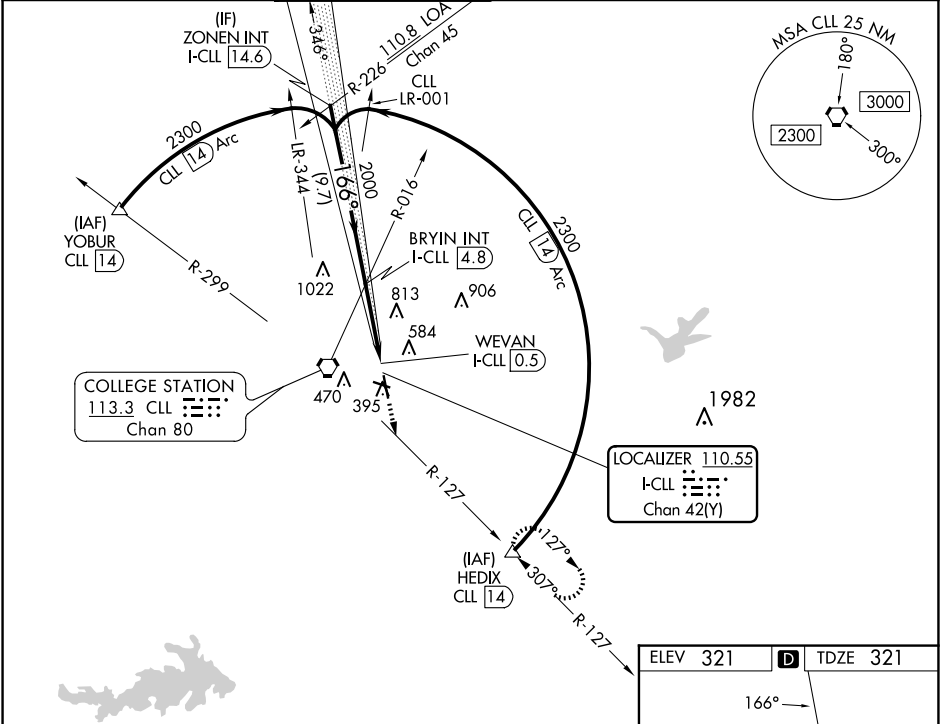
DME required.

▼  
▲

Rwy 17 helicopter visibility reduction below ¾ SM NA.

MISSED APPROACH: Climb to 2000 on heading 166° and CLL R-127 to HEDIX/CLL 14 DME and hold.

ATIS <b>126.85</b>	HOUSTON APP CON <b>134.3 360.85</b>	EASTERWOOD TOWER ★ <b>118.5</b> (CTAF) <b>284.7</b>	GND CON <b>128.7 284.7</b>	CLNC DEL <b>128.7</b>	CLNC DEL <b>120.4</b> (when twr closed)	UNICOM <b>122.95</b>
-----------------------	--	--	-------------------------------	--------------------------	---	-------------------------



BACK COURSE

SC-5, 10 JUL 2025 to 07 AUG 2025

Use I-CLL DME when on the localizer course.

ZONEN INT I-CLL 14.6

BRYIN INT I-CLL 4.8

WEVAN I-CLL 0.5

2300

2000

166°

3.04° TCH 51

I-CLL 1.5

Disregard glideslope indications.

9.7 NM

3.3 NM

1 NM

0.7

2000

hdg 166° and CLL R-127

HEDIX

ELEV 321

D

TDZE 321

REIL Rwy 29  
MRL Rwy 11-29  
HIRL Rwy 17-35

FAF to MAP 4.3 NM

Knots	60	90	120	150	180
Min:Sec	4:18	2:52	2:09	1:43	1:26