

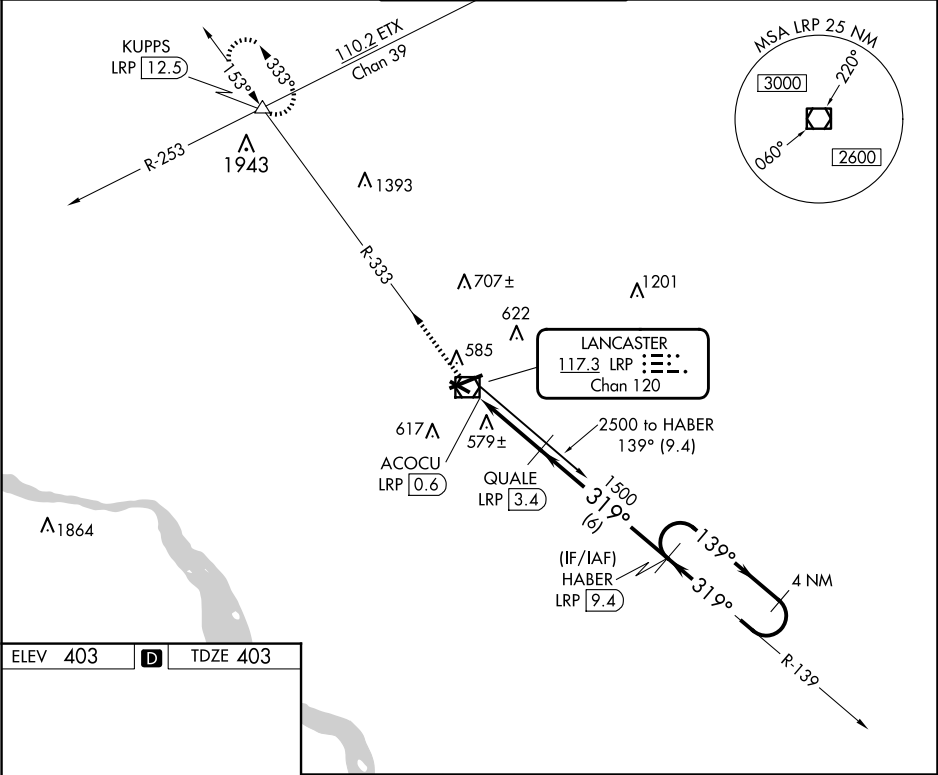
VOR/DME LRP	APP CRS	Rwy Ldg
117.3	319°	4102
Chan 120		TDZE 403
		Apt Elev 403

VOR/DME RWY 31

LANCASTER (LNS)

<div><div></div><div>Night landing: Rwy 13, 31 NA. Helicopter visibility reduction below 1 SM NA. When local altimeter setting not received, use Harrisburg Intl altimeter setting and increase all MDA 80 feet, increase Cat C/D visibility ¼ mile.</div></div>	MISSED APPROACH: Climb to 3000 via LRP VOR/DME R-333 to KUPPS INT/LRP 12.5 DME and hold.
--	--

ATIS	HARRISBURG APP CON	LANCASTER TOWER★	GND CON	UNICOM
125.675	126.45 281.525	120.9 (CTAF) 251.1	121.8	122.95



ELEV 403	D	TDZE 403
----------	---	----------

