

VOR/DME LRP	APP CRS	Rwy Ldg
117.3	090°	6118
Chan 120		TDZE 399
		Apt Elev 403

VOR RWY 8

LANCASTER (LNS)

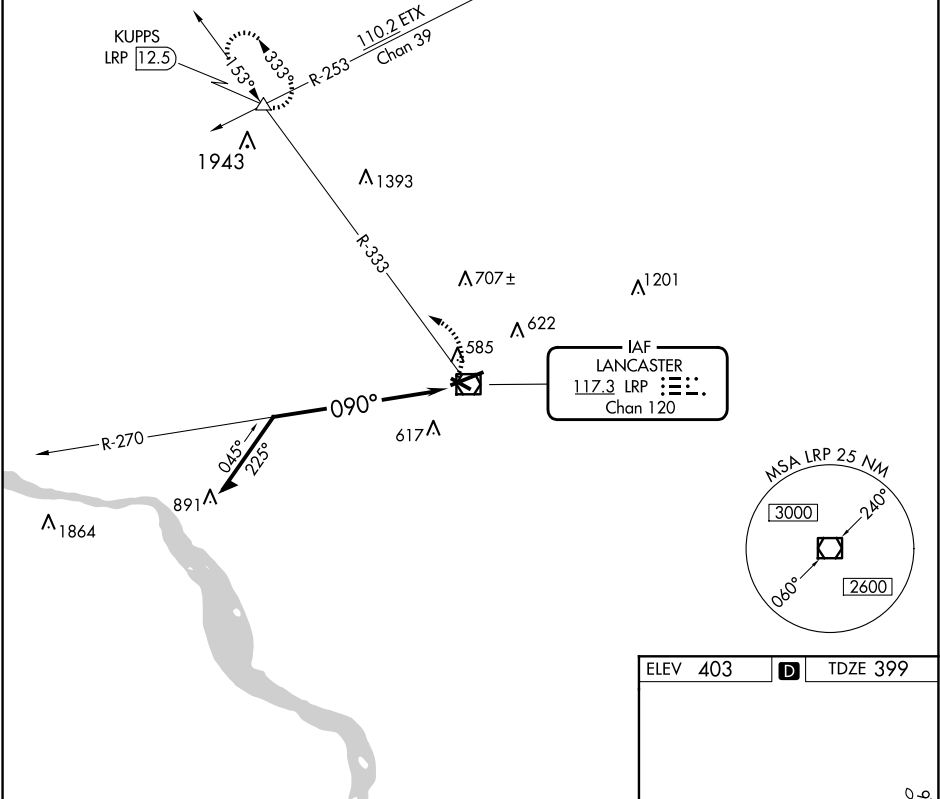
Night landing: Rwy 13, 31 NA. Inop table does not apply.

When local altimeter setting not received, use Harrisburg Init altimeter setting and increase all MDA 80 feet.

MALSR

MISSED APPROACH: Climbing left turn to 3000 via LRP VOR/DME R-333 to KUPPS INT/LRP 12.5 DME and hold.

ATIS	HARRISBURG APP CON	LANCASTER TOWER ★	GND CON	UNICOM
125.675	126.45 281.525	120.9 (CTAF) 251.1	121.8	122.95



Remain within 10 NM

LRP VOR/DME

3000

LRP R-333

KUPPS

2900

270°

090°

CATEGORY	A	B	C	D
S-8	1400-1¼ 1001 (1000-1¼)	1400-1½ 1001 (1000-1½)	1400-3	1001 (1000-3)
CIRCLING	1400-1¼ 997 (1000-1¼)	1400-1½ 997 (1000-1½)	1400-3	997 (1000-3)

ELEV 403

TDZE 399

TWR 476

6933 X 150

0.3% UP

4102 X 100

467

090°

REIL Rwy 31

HIRL Rwy 8-26

MIRL Rwy 13-31