

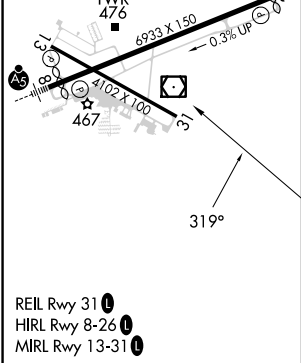
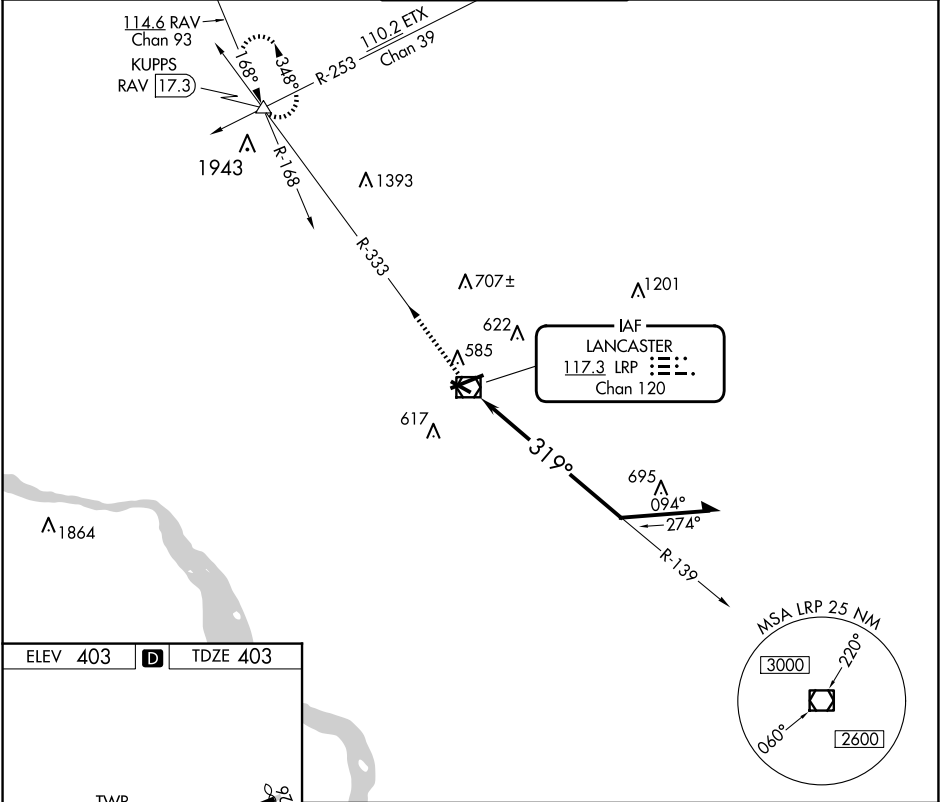
VOR/DME LRP	APP CRS	Rwy Ldg
<b>117.3</b>	<b>319°</b>	<b>4102</b>
Chan <b>120</b>		TDZE <b>403</b>
		Apt Elev <b>403</b>

VOR RWY 31

LANCASTER (LNS)

<div><div>▼</div><div>▲</div></div> <div>Night landing: Rwy 13, 31 NA. Helicopter visibility reduction below 1 SM NA.</div>	MISSED APPROACH: Climb to 3000 via LRP VOR/DME R-333 to KUPPS INT/RAV 17.3 DME and hold.
---	---

ATIS <b>125.675</b>	HARRISBURG APP CON <b>126.45 281.525</b>	LANCASTER TOWER★ <b>120.9</b> (CTAF) <b>251.1</b>	GND CON <b>121.8</b>	UNICOM <b>122.95</b>
------------------------	---	--	-------------------------	-------------------------



<div>3000</div> <div>↑</div>	LRP R-333	KUPPS △	LRP VOR/DME	Remain within 10 NM
<div>139°</div> <div>319°</div> <div>2500</div>				
CATEGORY	A	B	C	D
S-31	1060-1	657 (700-1)	1060-1¾ 657 (700-1¾)	1060-2 657 (700-2)
CIRCLING	1060-1	657 (700-1)	1060-1¾ 657 (700-1¾)	1080-2¼ 677 (700-2¼)

NE-4, 10 JUL 2025 to 07 AUG 2025

NE-4, 10 JUL 2025 to 07 AUG 2025