

WAAS CH <b>77915</b> <b>W08A</b>	APP CRS <b>077°</b>	Rwy Idg <b>6118</b> TDZE <b>399</b> Apt Elev <b>403</b>
--	------------------------	---

RNAV (GPS) RWY 8

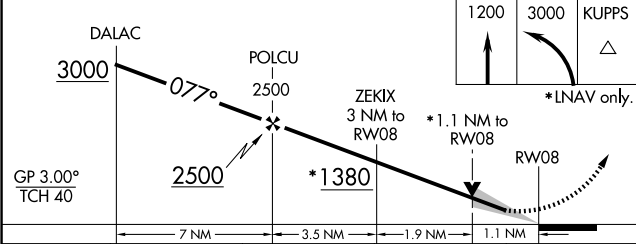
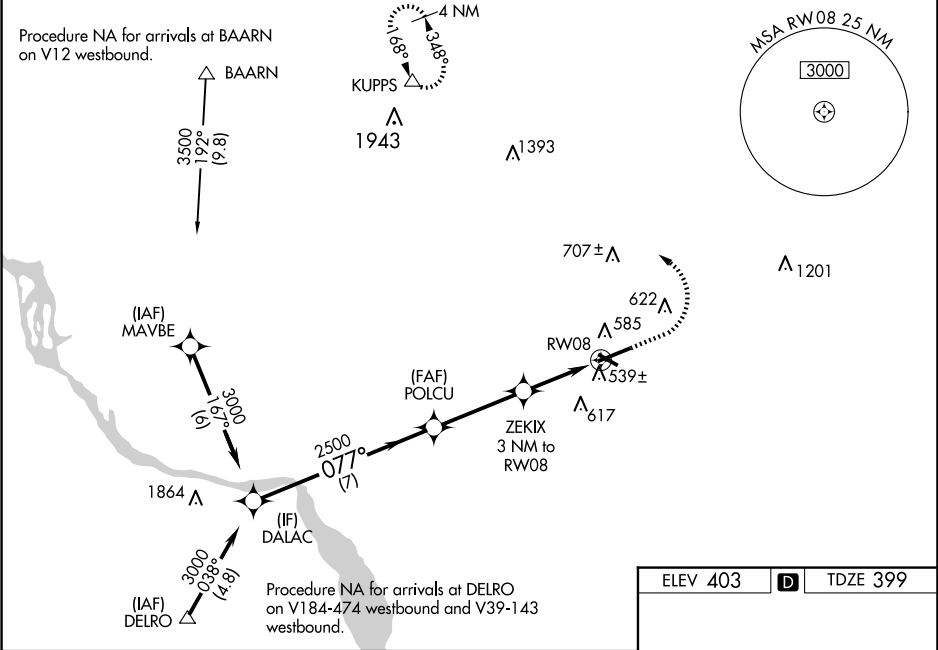
LANCASTER (LNS)

For uncompensated Baro-VNAV systems, LNAV/VNAV NA below -15°C (5°F) or above 54°C (130°F). DME/DME RNP-0.3 NA. When local altimeter setting not received, use Harrisburg Intl altimeter setting and increase all DA 64 feet and all MDA 80 feet, increase LNAV/VNAV all Cats visibility ¼ mile, LNAV and Circling Cats C and D visibility ¼ mile. Baro-VNAV and VDP NA when using Harrisburg Intl altimeter setting. Night landing: Rwy 13, 31 NA. For inoperative MALSRR increase LNAV/VNAV all Cats visibility to 1¼ mile, and LNAV Cats C/D visibility to 1½ mile. For inoperative MALSRR when using Harrisburg Intl altimeter setting, increase LPV all Cats visibility to ¾ mile, LNAV/VNAV all Cats visibility to 1½ mile and LNAV Cats C/D visibility to 1½ mile.

MALSRR

MISSED APPROACH:  
Climb to 1200 then climbing left turn to 3000 direct KUPPS and hold.

ATIS <b>125.675</b>	HARRISBURG APP CON <b>126.45 281.525</b>	LANCASTER TOWER ★ <b>120.9 (CTAF) 251.1</b>	GND CON <b>121.8</b>	UNICOM <b>122.95</b>
------------------------	---	--	-------------------------	-------------------------



CATEGORY	A	B	C	D
LPV DA	599-½		200 (200-½)	
LNAV/VNAV DA	784-¾		385 (400-¾)	
LNAV MDA	800-½	401 (400-½)	800-¾	401 (400-¾)
CIRCLING	940-1	537 (600-1)	960-1½ 557 (600-1½)	1060-2 657 (700-2)

ELEV 403 **D** TDZE 399

REIL Rwy 31   
HIRL Rwy 8-26   
MIRL Rwy 13-31