

WAAS CH 72919 W14A	APP CRS 145°	Rwy Idg TDZE 2119 Apt Elev 2143
--	------------------------	---

RNAV (GPS) RWY 14

BRADFORD RGNL (BFD)

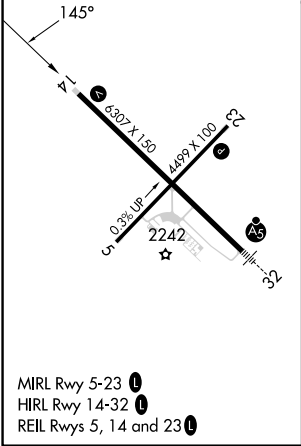
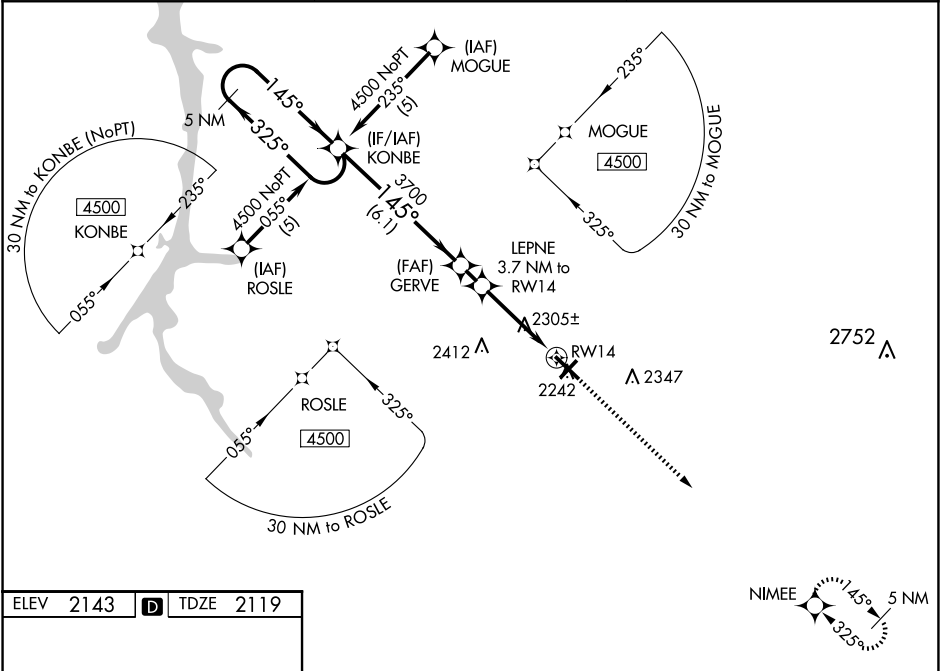
⚠

For uncompensated Baro-VNAV systems, LNAV/VNAV NA below -19°C (-2°F) or above 53°C (129°F). Baro-VNAV and VDP NA when using St. Marys altimeter setting. DME/DME RNP-0.3 NA. Helicopter visibility reduction below ¾ SM NA. When local altimeter setting not received, use St. Marys altimeter setting: increase LPV DA to 2454 feet and all visibilities ½ SM; increase LNAV/VNAV DA to 2602 feet and all visibilities ¼ SM; increase all MDAs 100 feet and Circling Cat C visibility ½ SM, and LNAV Cats C and D and Circling Cat D ¼ SM.

MISSED APPROACH:

Climb to 4500 direct NIMEE and hold.

ASOS 133.825	CLEVELAND CENTER 124.325 353.85	UNICOM 123.075 (CTAF) 0
------------------------	---	-----------------------------------



5 NM Holding Pattern		VGSI and RNAV glidepath not coincident (VGSI Angle 3.00/TCH 42).		4500	NIMEE
KONBE		GERVE		LEPNE	
4500		3700		3.7 NM to RW14	
GP 3.00° TCH 55		*3340		*1.3 NM to RW14	
6.1 NM		1.1 NM		2.4 NM	
1.3 NM		1.3 NM		1.3 NM	
CATEGORY	A	B	C	D	
LPV DA	2369-1		250 (300-1)		
LNAV/VNAV DA	2517-1 3/8		398 (400-1 3/8)		
LNAV MDA	2560-1	441 (500-1)	2560-1 3/8	441 (500-1 3/8)	
CIRCLING	2620-1	477 (500-1)	2720-1 1/2	2760-2	
			577 (600-1 1/2)	617 (700-2)	