

TACAN Y or VOR/DME RWY 3

VORTAC FIM 112.5 Chan 72	APCH CRS 025°	Rwy Idg 11,102 TDZE 10 Arpt Elev 13
--------------------------------	------------------	---

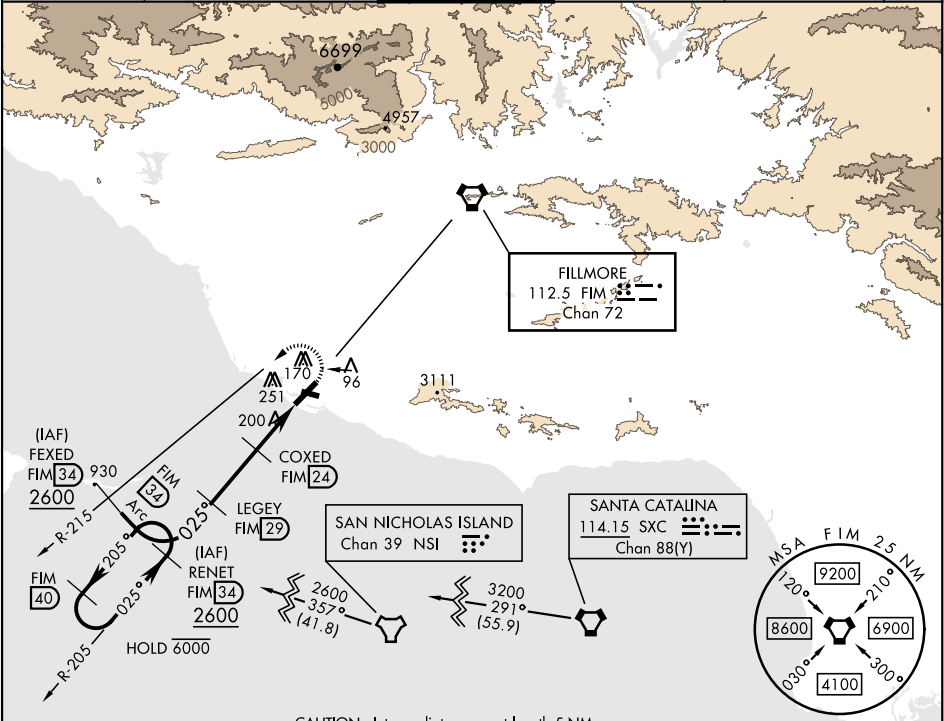
[USN] POINT MUGU NAS (NAVAL BASE VENTURA CO) (KNTD)

▼ \* When ALS inop, increase CAT AB vis to 1 mile, CAT CDE to 1½ miles.  
\*\* Circling not authorized E of Rwy 3-21.

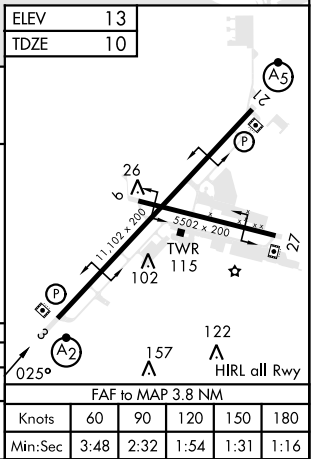
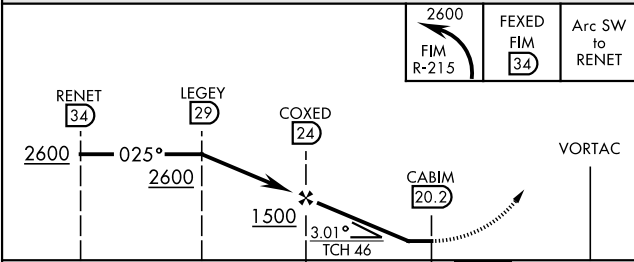
SALSF

MISSED APPROACH: Climbing left turn to 2600. Intercept the FIM VORTAC R-215, then via FIM R-215 to FEDEX, Arc SW of FIM via the 34 DME arc to RENET and hold.

ATIS ★ 125.55 363.05	POINT MUGU APP CON 128.65 307.275	POINT MUGU TOWER ★ 124.85 290.375	GND CON 121.6 360.2	CLNC DEL 120.75 279.55	ASR/ PAR
-------------------------	--------------------------------------	--------------------------------------	------------------------	---------------------------	-------------



ELEV 13
TDZE 10



CATEGORY	A	B	C	D	E
S-3*	460-¾ 450 (500-¾)		460-1 450 (500-1)		
CIRCLING **	460-1 447 (500-1)	480-1 467 (500-1)	480-1½ 467 (500-1½)	580-2 567 (600-2)	NA

TACAN Y or VOR/DME RWY 3

SW-3, 10 JUL 2025 to 07 AUG 2025

SW-3, 10 JUL 2025 to 07 AUG 2025