

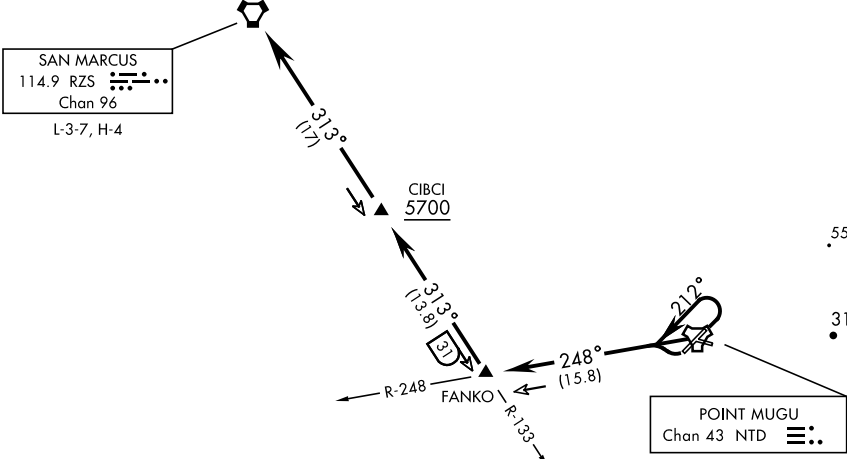
ATIS ★ 125.55 363.05	AL-925 [USN]	Rwy	Knots	60	120	180	240	300	360
CLNC DEL		* 03 ⓐ	V/V(fpm)	205	410	615	820	1025	1230
120.75 279.55		† 21 ⓑ	V/V(fpm)	216	432	648	864	1080	1296
GND CON		† 27 ⓓ	V/V(fpm)	214	428	642	856	1070	1284
121.6 360.2									
TOWER ★									
124.85 290.375									
DEP CON									
128.65 307.275									

* Minimum

† ATC Climb Rate

ⓐ to 700

ⓑ to 8900



TACAN REQUIRED

▼

DEPARTURE ROUTE DESCRIPTION

TAKEOFF RWY 3: Climbing left turn to 212° within 3 DME of NTD TACAN, thence...

TAKEOFF RWY 21: Turn right, thence...

TAKEOFF RWY 27: Turn left, thence...

...intercept NTD R-248 and via NTD R-248 to FANKO (NTD R-248/16 DME), then via RZS VORTAC R-133 to RZS VORTAC, then via assigned routing.
Cross CIBCI (RZS R-133/17 DME) at or above 5700.

SW-3, 10 JUL 2025 to 07 AUG 2025

SW-3, 10 JUL 2025 to 07 AUG 2025