

OXNARD, CALIFORNIA

RNAV (GPS) RWY 3

- (USN)

POINT MUGU NAS (NAVAL BASE VENTURA CO) (KNTD)

APCH CRS 032°	Rwy ldg	11,102
	TDZE	10
	Arpt Elev	13

T * When ALS inop, increase CAT D vis to 7/8 mile.
 ** When ALS inop, increase vis to 1 mile.
 *** Circling not authorized E of Rwy 3-21.

[illegible]

MISSED APPROACH: Climb to 600 then climbing left turn to 2600 direct RENET and hold.

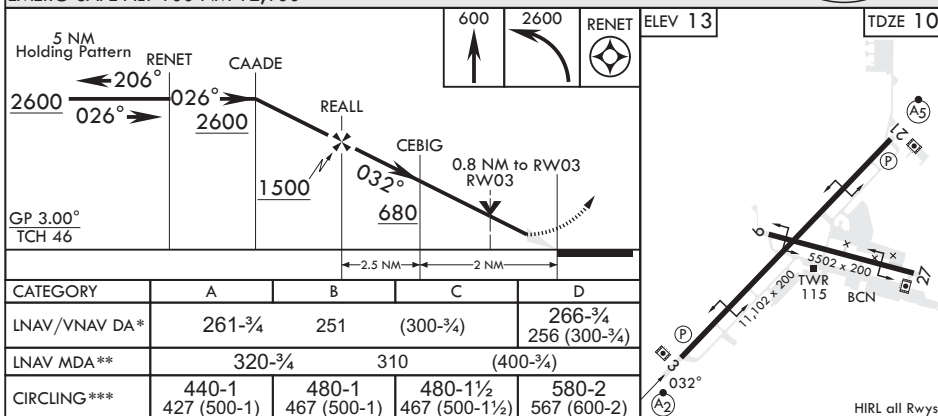
ATIS★ 125.55 363.05	APP CON/DEP CON 128.65 307.275	TOWER★ 124.85 290.375	GND CON 121.6 360.2	CLNC DEL 120.75 279.55	ASR/PAR
------------------------	-----------------------------------	--------------------------	------------------------	---------------------------	---------

DME/DME RNP-0.3 NA

For uncompensated Baro-VNAV systems, procedure NA below -15°C (5°F) or above 54°F (130°F).



EMERG SAFE ALT 100 NM 12,100



OXNARD, CALIFORNIA

34°07'N - 119°07'W POINT MUGU NAS (NAVAL BASE VENTURA CO) (KNTD)

Amdt 5 31DEC20

RNAV (GPS) RWY 3

SW-3, 10 JUL 2025 to 07 AUG 2025

SW-3, 10 JUL 2025 to 07 AUG 2025