

OXNARD, CALIFORNIA

RNAV (GPS) RWY 21

APCH CRS	Rwy Idg	11,102
212°	TDZE	13
	Arprt Elev	13

- (USN)

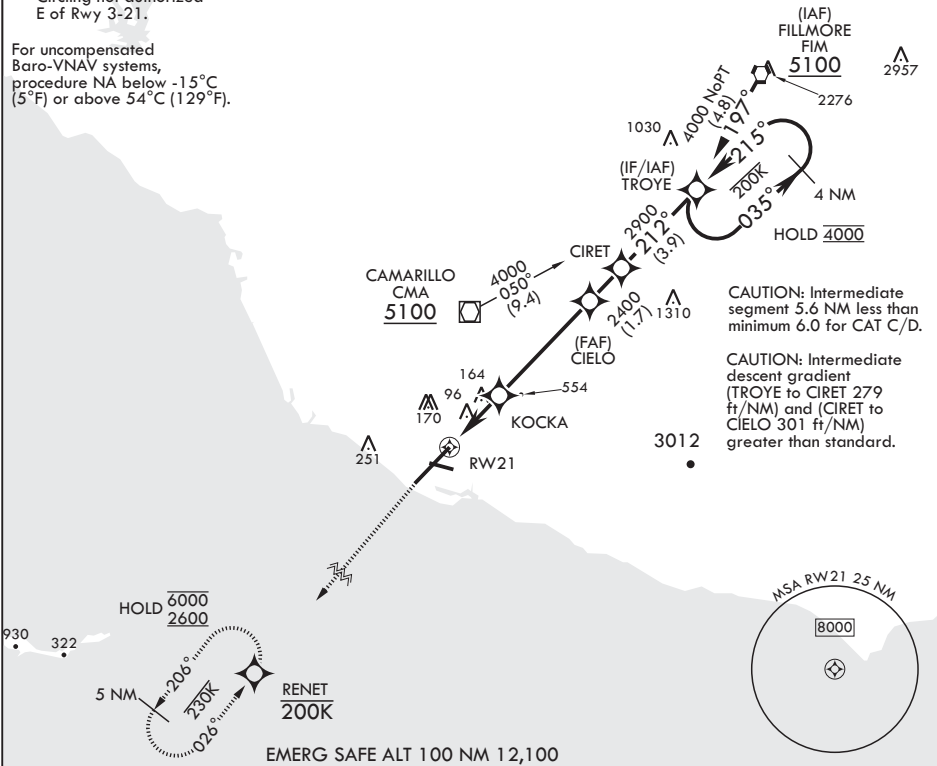
POINT MUGU NAS (NAVAL BASE VENTURA CO) (KNTD)

RNP APCH	MALSR	MISSED APPROACH: Climb to 600 then climbing left turn to 2600 direct RENET and hold.
* When ALS inop, increase vis to 7/8 mile. ** When ALS inop, increase CAT AB vis to 1 mile; CAT CD vis to 1 3/8 miles.		

ATIS*	APP CON/DEP CON	TOWER*	GND CON	CLNC DEL	ASR/PAR
125.55 363.05	128.65 307.275	124.85 290.375	121.6 360.2	120.75 279.55	

*** Circling not authorized
E of Rwy 3-21.

For uncompensated
Baro-VNAV systems,
procedure NA below -15°C
(5°F) or above 54°C (129°F).



600	2600	RENET	TROYE	ELEV 13	TDZE 13
crs 212°			035°		
			215°		
			4000		
			4 NM Holding Pattern		
			GP 3.00°		
			TCH 46		
CATEGORY	A	B	C	D	
LNAV/VNAV DA*	289-½	276	(300-½)		
LNAV MDA**	460-½	447 (500-½)	460-¾	447 (500-¾)	
CIRCLING***	460-1	520-1	520-1½	600-2	
	447 (500-1)	507 (600-1)	507 (600-1½)	587 (600-2)	

OXNARD, CALIFORNIA

34°07'N - 119°07'W POINT MUGU NAS (NAVAL BASE VENTURA CO) (KNTD)

Amdt 7 29DEC22

RNAV (GPS) RWY 21

SW-3, 10 JUL 2025 to 07 AUG 2025

SW-3, 10 JUL 2025 to 07 AUG 2025