

HI-TACAN Z RWY 21

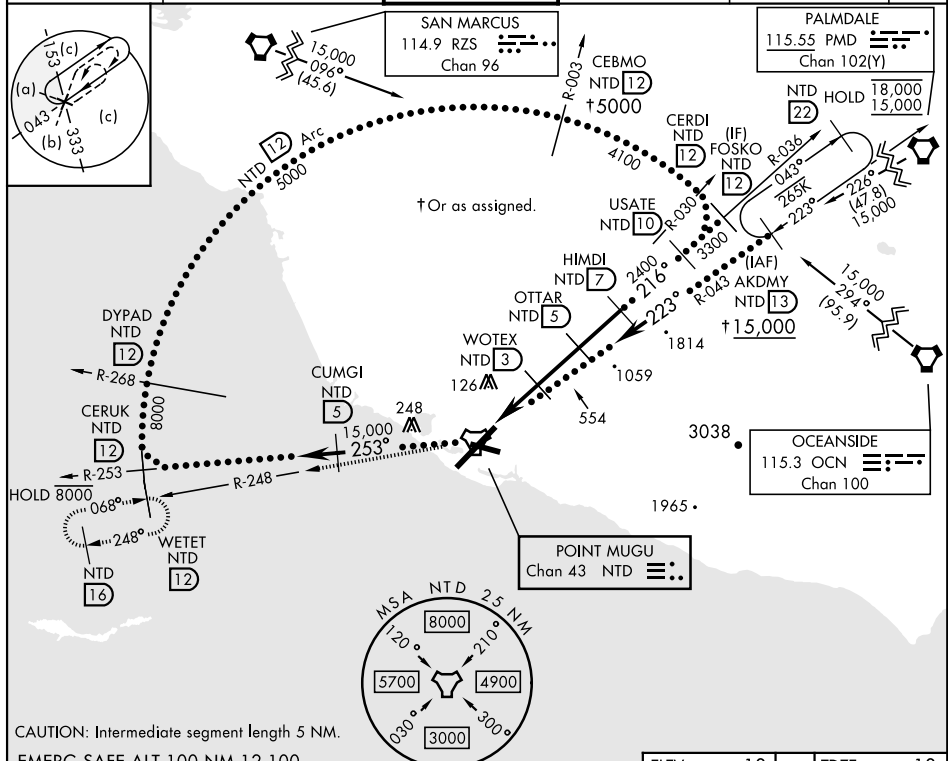
TACAN Chan 43	APCH CRS 216°	Rwy Idg 11,102 TDZE 13 Arpt Elev 13	[USN]	POINT MUGU NAS (NAVAL BASE VENTURA CO) (KNTD)
-------------------------	-------------------------	--	-------	--

* When ALS inop, increase vis to 1½ miles.
 ** Circling not authorized E of Rwy 3-21.

MALS R

MISSED APPROACH: Climb to 5000 via NTD TACAN R-036 to NTD, then via NTD R-248 to WETET and hold, continue climb-in-hold to 5000.

ATIS ★ 125.55 363.05	POINT MUGU APP CON 128.65 307.275	POINT MUGU TOWER★ 124.85 290.375	GND CON 121.6 360.2	CLNC DEL 120.75 279.55	ASR/ PAR
--------------------------------	---	--	-------------------------------	----------------------------------	-------------



CAUTION: Intermediate segment length 5 NM.
EMERG SAFE ALT 100 NM 12,100

5000

NTD R-036

NTD R-248

WETET NTD 12

VGSI and descent angle not coincident.

NTD TACAN

ZATPO NTD 1.6

WOTEX NTD 3

OTTAR NTD 5

HIMDI NTD 7

USATE NTD 10

FOSKO NTD 12

3900

3300

2400

860

1500

1.4 NM

2 NM

2 NM

ELEV 13

TDZE 13

CATEGORY	C	D	E
S-21*	480-1	467 (500-1)	
CIRCLING**	480-1½ 467 (500-1½)	580-2 567 (600-2)	860-3 847 (900-3)